

Extraction set for hip revisions

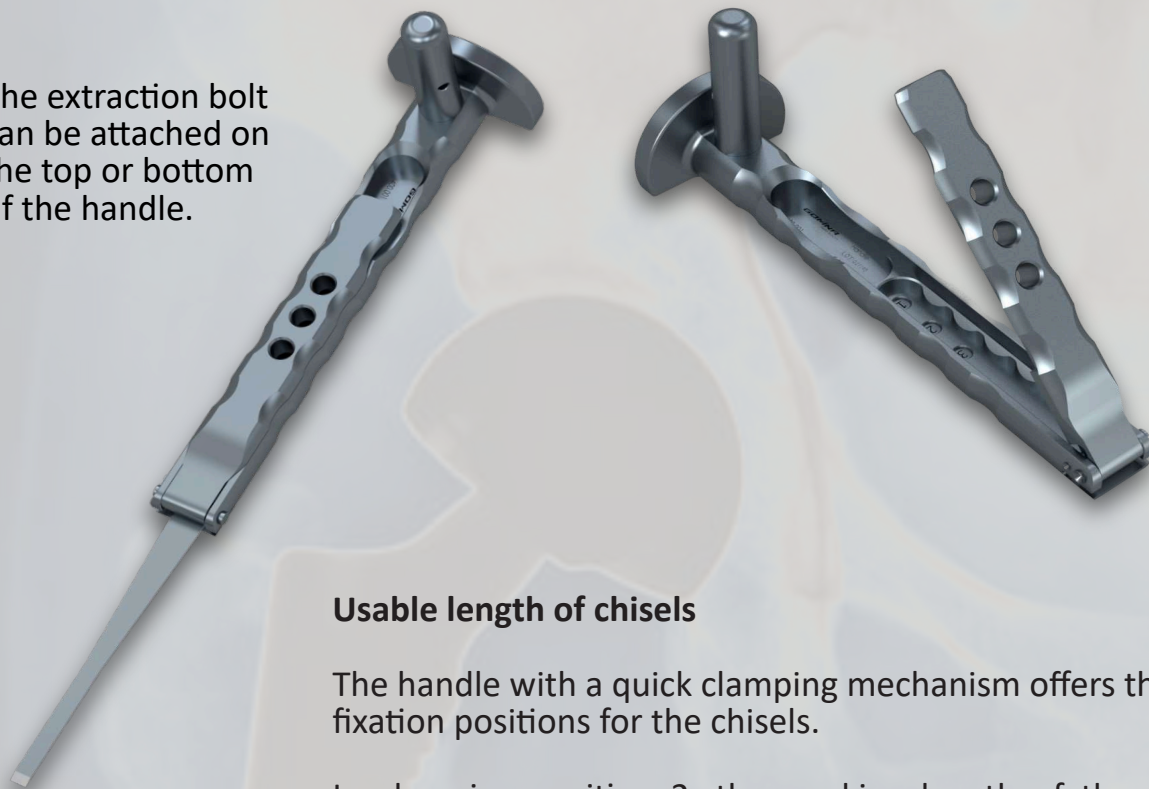
Jig-guided system

fitting **Fitmore**[®] (Zimmer Biomet)



Handle and extraction bolt

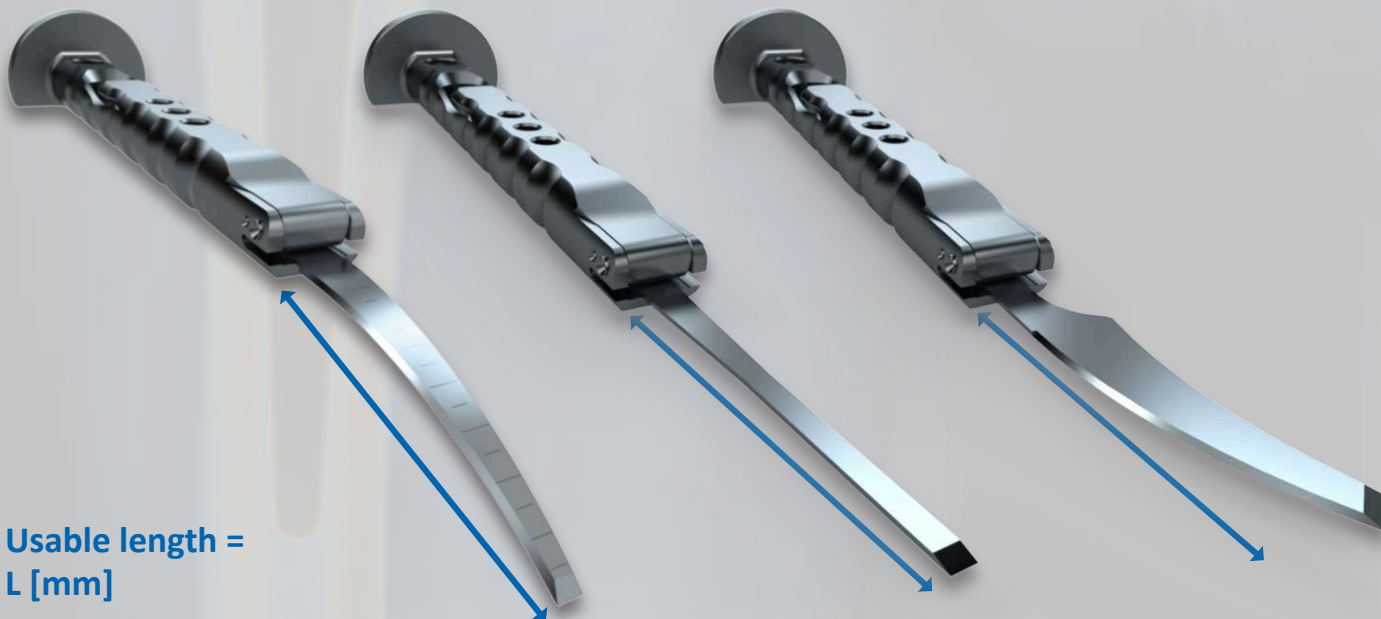
The extraction bolt can be attached on the top or bottom of the handle.



Usable length of chisels

The handle with a quick clamping mechanism offers three fixation positions for the chisels.

In clamping position 2, the working length of the chisel is extended by 15 mm compared to position 1, and by a further 15 mm in position 3. In total, the working length can be extended by 30 mm from position 1 to position 3.

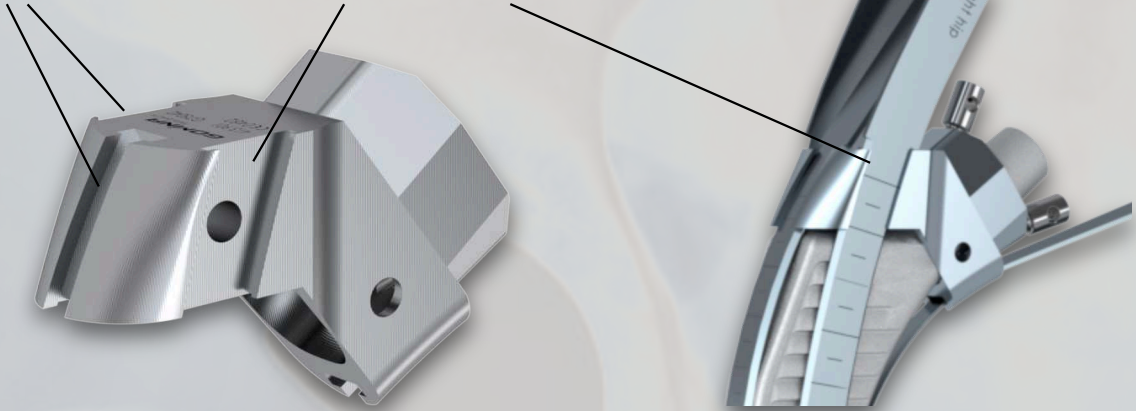


Usable length =
L [mm]

Jig

Guide grooves

Guide grooves



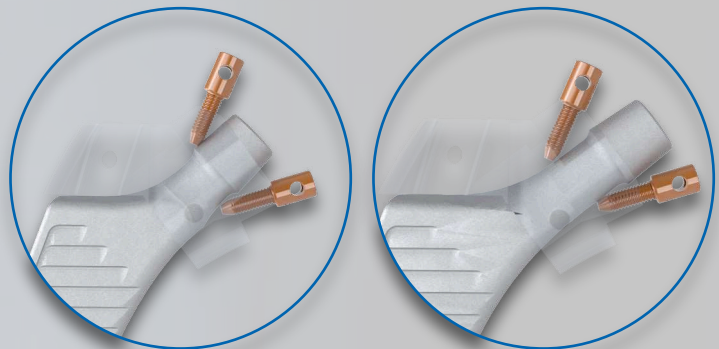
The jig-guided chisels are matched to the guide grooves of the corresponding jigs. The chisels are guided through the grooves until the cutting edge makes contact with the bone. Then the chisels can be driven in with light hammer strikes.

The jig is positioned on the cone of the stem and attached with the two fixation screws.



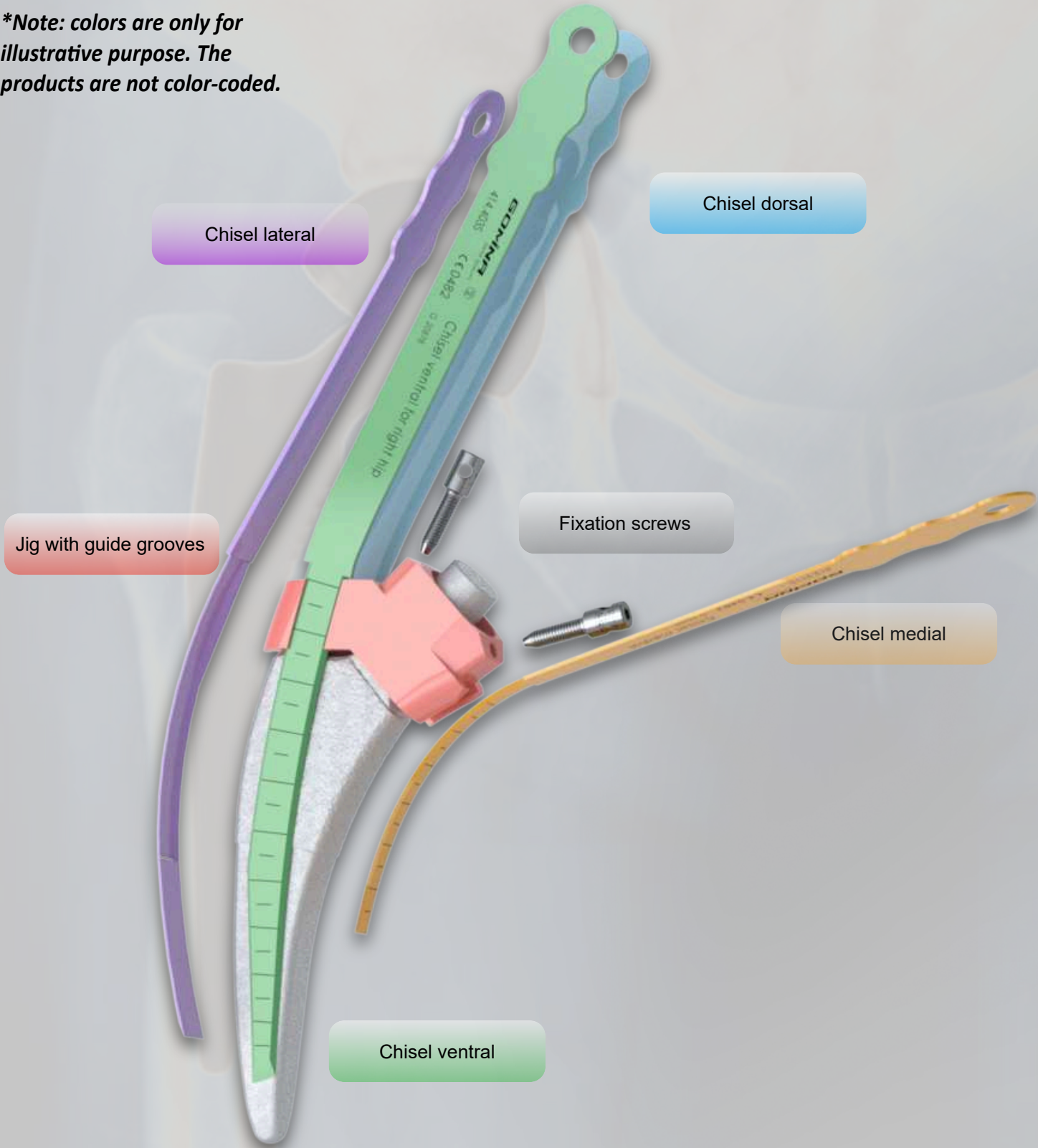
For A&B stems, first the *medial* fixation screw must be screwed in completely. Then screw in the *lateral* screw until it fixes the jig by contact with the stem. (picture 1)

For B extended stems, first screw in the *lateral* fixation screw completely. Then screw in the *medial* screw until it fixes the jig. (picture 2)



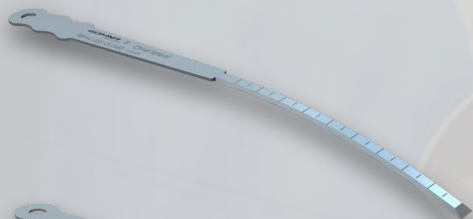
Overview of chisels with jig

**Note: colors are only for illustrative purpose. The products are not color-coded.*



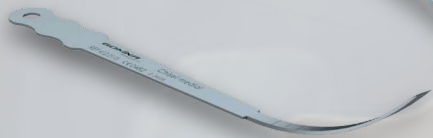
Indicated references by stem size

Fitmore® stem sizes **A1/A2/A3/B1/B2/B3 & extended**

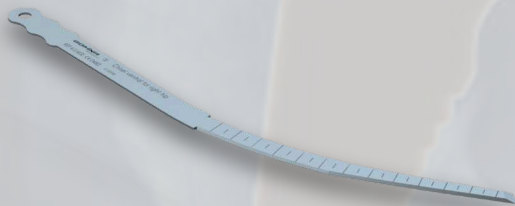


Reference (sterile)	Article Description	L [mm]	W [mm]	T [mm]
---------------------	---------------------	--------	--------	--------

413.202S	Chisel lateral	138.0	7.8	1.19
-----------------	----------------	-------	-----	------



413.211S	Chisel medial	105.2	5.8	1.19
-----------------	---------------	-------	-----	------

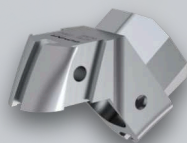


414.401S	Chisel ventral for right hip	148.7	4.0	1.19
-----------------	------------------------------	-------	-----	------



414.402S	Chisel dorsal for right hip	148.7	4.0	1.19
-----------------	-----------------------------	-------	-----	------

Ref. (non-sterile)	Article Description
--------------------	---------------------



414.901	Jig
----------------	-----



400.108	Fixation screw
----------------	----------------

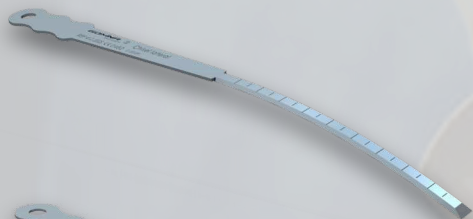


400.106	Allen key
----------------	-----------

GOMINA
SWISS QUALITY

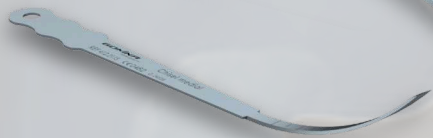
Indicated references by stem size

Fitmore® stem sizes **A4/A5/A6/B4/B5/B6 & extended**

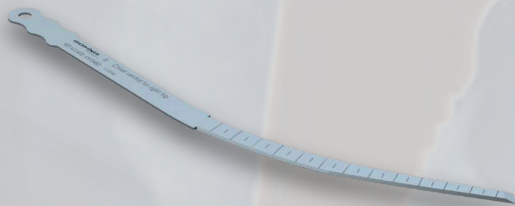


Reference (sterile)	Article Description	L [mm]	W [mm]	T [mm]
---------------------	---------------------	--------	--------	--------

413.202S	Chisel lateral	138.0	7.8	1.19
-----------------	----------------	-------	-----	------



413.211S	Chisel medial	105.2	5.8	1.19
-----------------	---------------	-------	-----	------

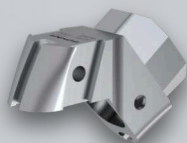


414.403S	Chisel ventral for right hip	157.6	4.0	1.19
-----------------	------------------------------	-------	-----	------



414.404S	Chisel dorsal for right hip	157.6	4.0	1.19
-----------------	-----------------------------	-------	-----	------

Ref. (non-sterile)	Article Description
--------------------	---------------------



414.902	Jig
----------------	-----



400.108	Fixation screw
----------------	----------------

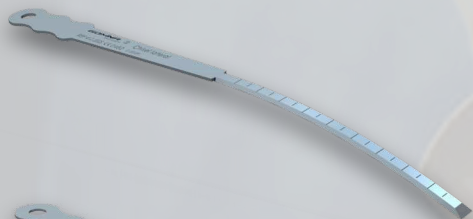


400.106	Allen key
----------------	-----------

GOMINA
SWISS QUALITY

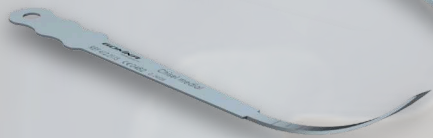
Indicated references by stem size

Fitmore® stem sizes **A7/A8/A9/B7/B8/B9 & extended**

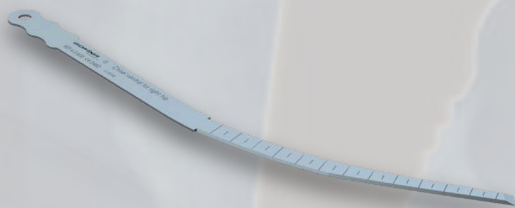


Reference (sterile)	Article Description	L [mm]	W [mm]	T [mm]
---------------------	---------------------	--------	--------	--------

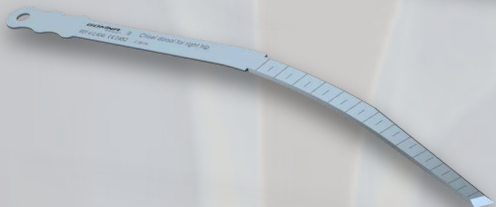
413.202S	Chisel lateral	138.0	7.8	1.19
-----------------	----------------	-------	-----	------



413.211S	Chisel medial	105.2	5.8	1.19
-----------------	---------------	-------	-----	------

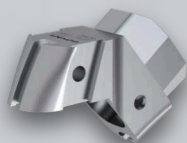


412.401S	Chisel ventral for right hip	170.0	4.0	1.19
-----------------	------------------------------	-------	-----	------



412.402S	Chisel dorsal for right hip	170.0	4.0	1.19
-----------------	-----------------------------	-------	-----	------

Ref. (non-sterile)	Article Description
--------------------	---------------------



414.903	Jig
----------------	-----



400.108	Fixation screw
----------------	----------------



400.106	Allen key
----------------	-----------

GOMINA
SWISS QUALITY

Indicated references by stem size

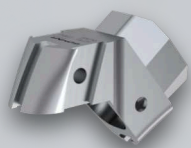
Fitmore® stem sizes **A10/A11/A12/B10/B11/B12 & extended**



Reference (sterile)	Article Description	L [mm]	W [mm]	T [mm]
---------------------	---------------------	--------	--------	--------

413.202S	Chisel lateral	138.0	7.8	1.19
413.211S	Chisel medial	105.2	5.8	1.19
412.403S	Chisel ventral for right hip	170.0	7.1	1.19
412.404S	Chisel dorsal for right hip	170.0	7.1	1.19

Ref. (non-sterile)	Article Description
--------------------	---------------------



414.904 Jig





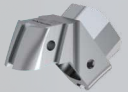

400.108 Fixation screw



400.106 Allen key

GOMINA
SWISS QUALITY

Overview of all references

	Fitmore stem sizes	Reference	Article Description	L [mm]	W [mm]	T [mm]
	All sizes	400.001	Handle incl. extraction bolt			
	All sizes	400.100	Extraction bolt (spare part)			
	All sizes	413.202S	Chisel lateral	138.0	7.8	1.19
	All sizes	413.211S	Chisel medial	105.2	5.8	1.19
	A1/A2/A3/B1/B2/B3 & ext.	414.401S	Chisel ventral for right hip	148.7	4.0	1.19
	A1/A2/A3/B1/B2/B3 & ext.	414.402S	Chisel dorsal for right hip	148.7	4.0	1.19
	A4/A5/A6/B4/B5/B6 & ext.	414.403S	Chisel ventral for right hip	157.6	4.0	1.19
	A4/A5/A6/B4/B5/B6 & ext.	414.404S	Chisel dorsal for right hip	157.6	4.0	1.19
	A7/A8/A9/B7/B8/B9 & ext.	412.401S	Chisel ventral for right hip	170.0	4.0	1.19
	A7/A8/A9/B7/B8/B9 & ext.	412.402S	Chisel dorsal for right hip	170.0	4.0	1.19
	A10/A11/A12/B10/B11/B12 & ext.	412.403S	Chisel ventral for right hip	170.0	7.1	1.19
	A10/A11/A12/B10/B11/B12 & ext.	412.404S	Chisel dorsal for right hip	170.0	7.1	1.19
	A1/A2/A3/B1/B2/B3 & ext.	414.901	Jig			
	A4/A5/A6/B4/B5/B6 & ext.	414.902	Jig			
	A7/A8/A9/B7/B8/B9 & ext.	414.903	Jig			
	A10/A11/A12/B10/B11/B12 & ext.	414.904	Jig			
	All sizes	400.108	Fixation screw			
	All sizes	400.106	Allen key			

Contact



Gomina AG
Raiftstrasse 4
3989 Niederwald, Switzerland
Phone +41 27 970 12 70
Fax +41 27 970 12 75
www.gomina.ch
sales@gomina.ch



GOMINA Deutschland GmbH
Ludwig-Vierling-Strasse 7
89233 Neu-Ulm, Germany
info@gomina.de

Version 2025-02
Last modification: 26.02.2025