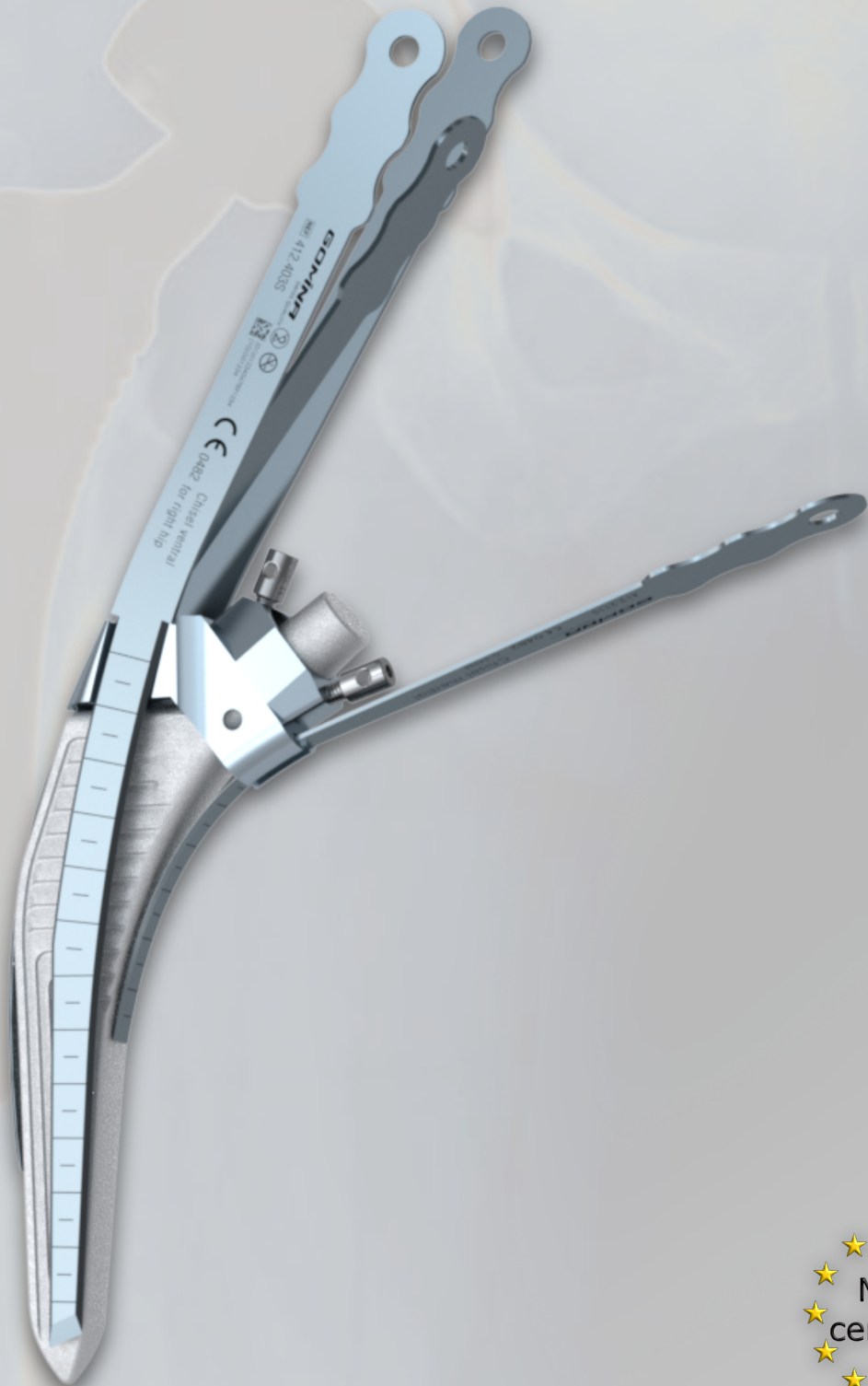


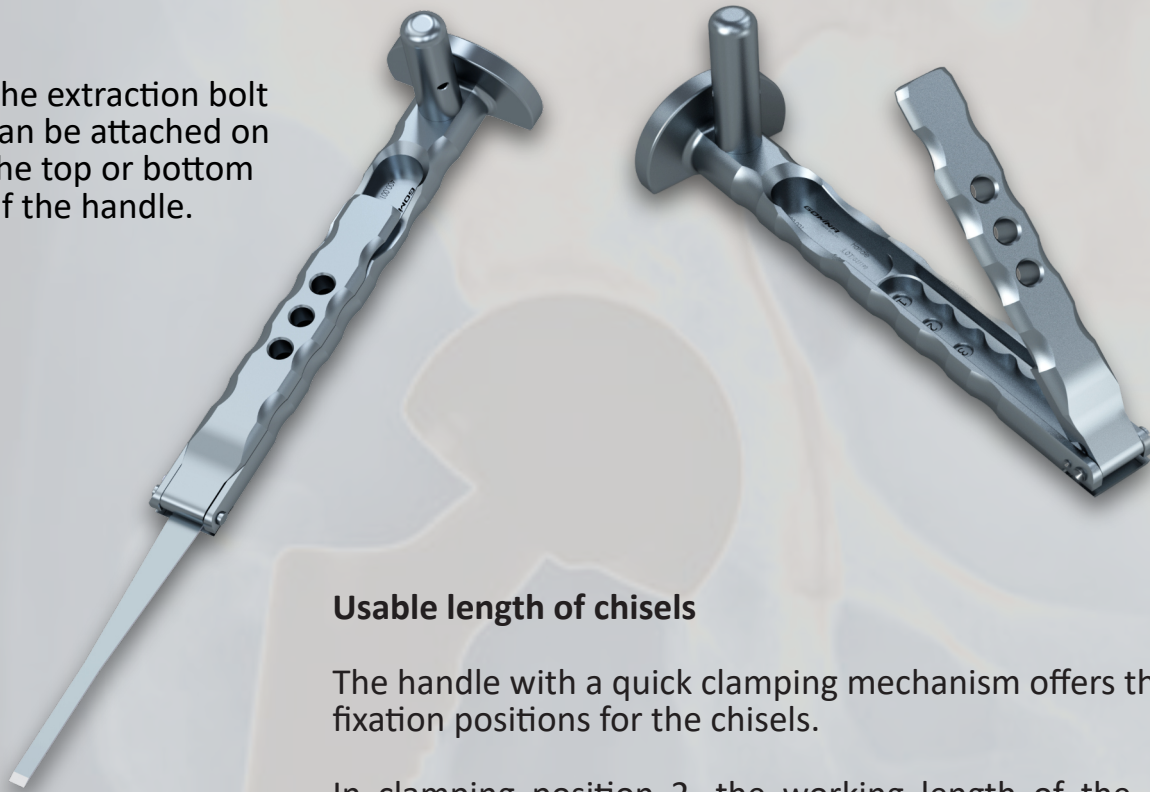
Extraction set for hip revisions

Jig-guided system
fitting **Amistem** (Medacta)



Handle and extraction bolt

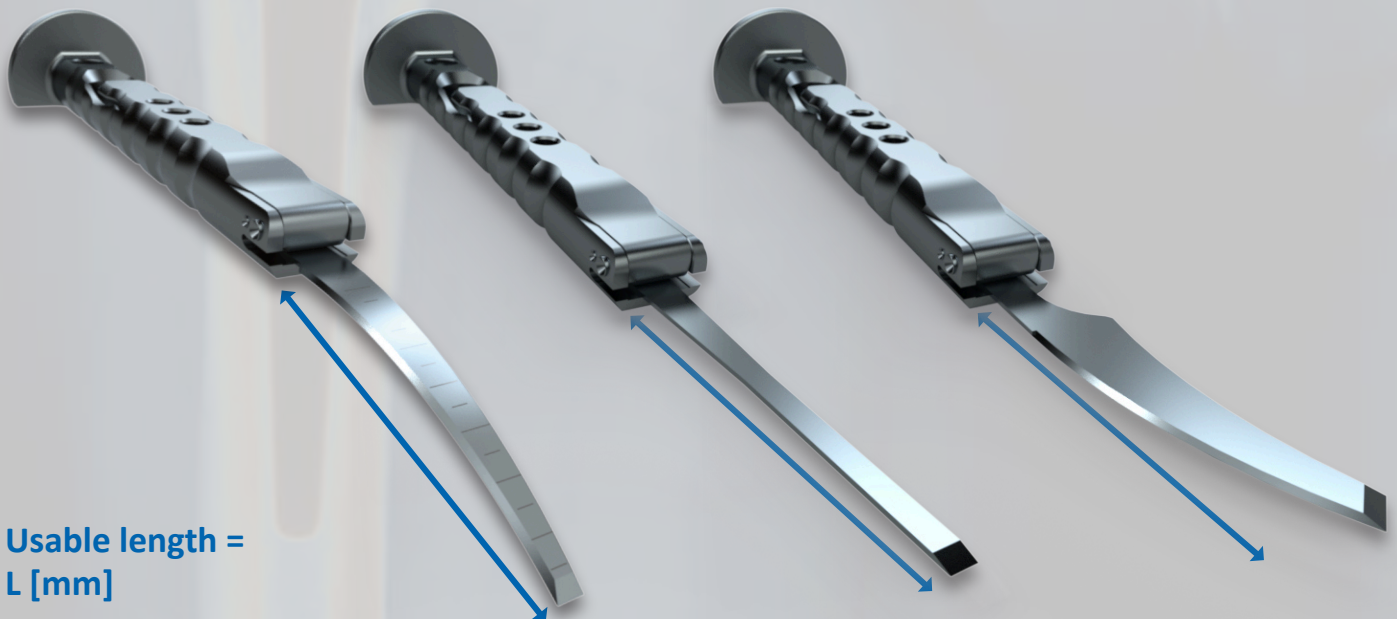
The extraction bolt can be attached on the top or bottom of the handle.



Usable length of chisels

The handle with a quick clamping mechanism offers three fixation positions for the chisels.

In clamping position 2, the working length of the chisel is extended by 15 mm compared to position 1, and by a further 15 mm in position 3. In total, the working length can be extended by 30 mm from position 1 to position 3.

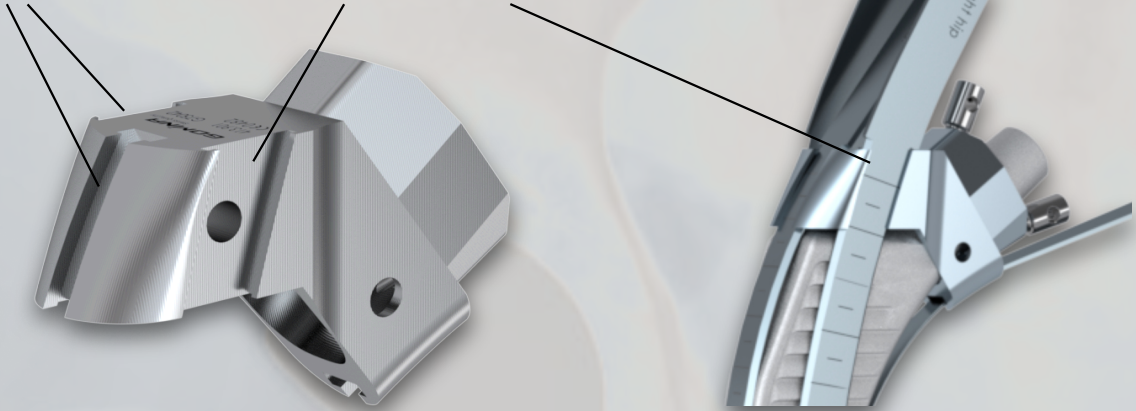


Usable length =
L [mm]

Jig

Guide grooves

Guide grooves



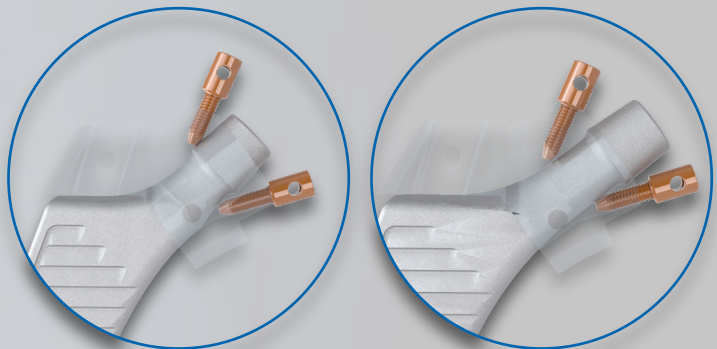
The jig-guided chisels are matched to the guide grooves of the corresponding jigs. The chisels are guided through the grooves until the cutting edge makes contact with the bone. Then the chisels can be driven in with light hammer strikes.

The jig is positioned on the cone of the stem and attached with the two fixation screws.



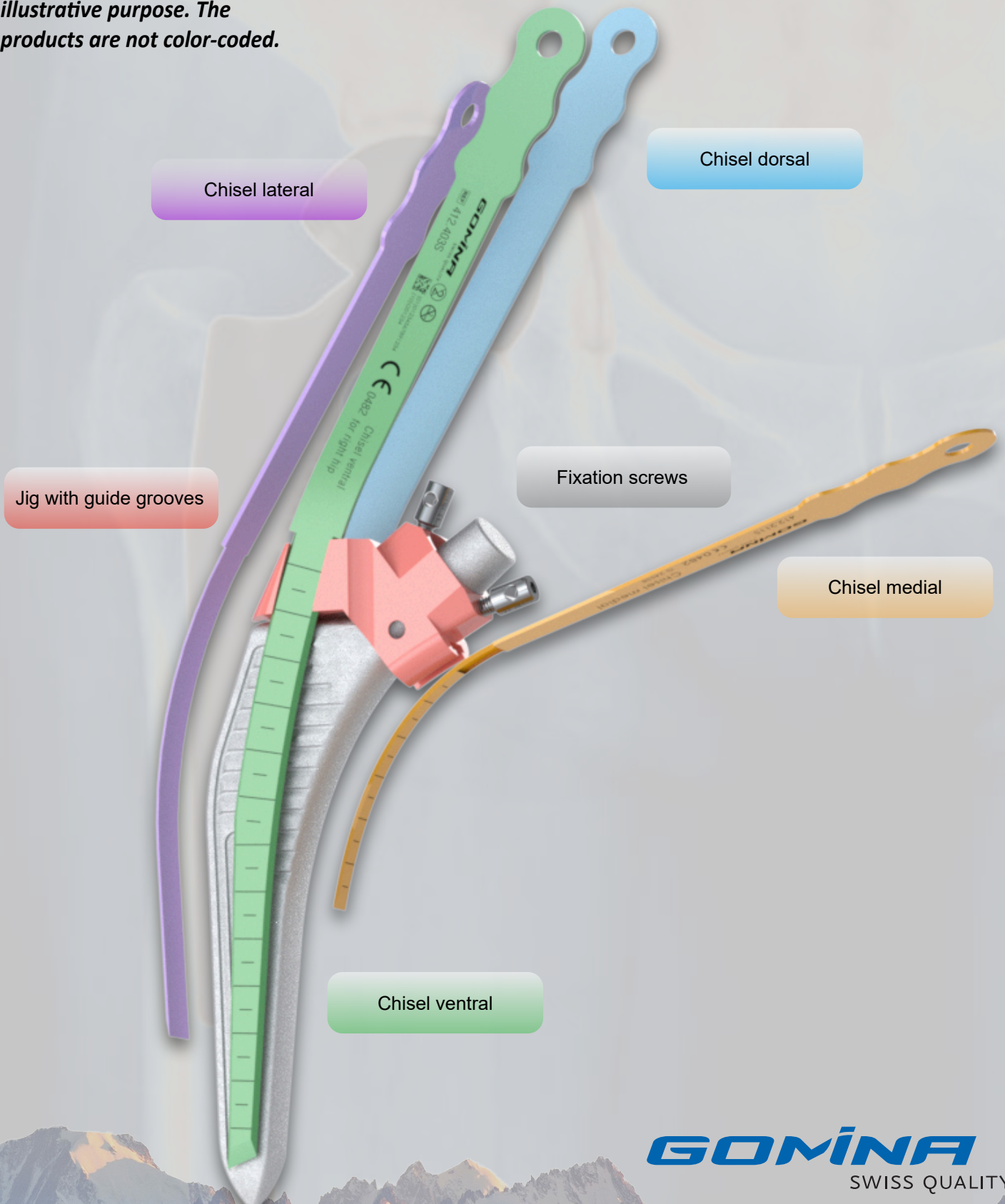
For standard stems, first the *medial* fixation screw must be screwed in completely. Then screw in the *lateral* screw until it fixes the jig by contact with the stem. (picture 1)

For lateralized stems, first screw in the *lateral* fixation screw completely. Then screw in the *medial* screw until it fixes the jig. (picture 2)



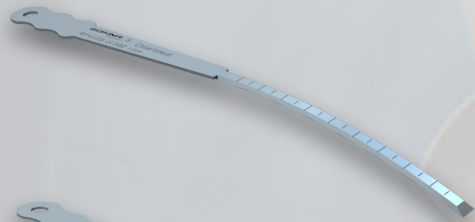
Overview of chisels with jig

**Note: colors are only for illustrative purpose. The products are not color-coded.*



Indicated references by stem size

Amistem stem sizes 0, 1



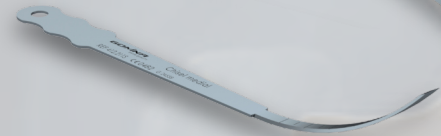
413.201S

Chisel lateral

L [mm]

W [mm]

T [mm]



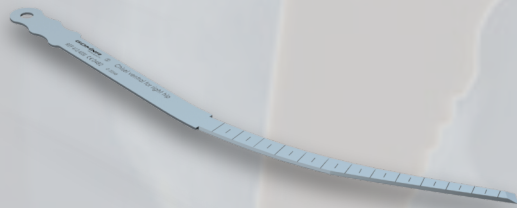
413.211S

Chisel medial

L [mm]

W [mm]

T [mm]



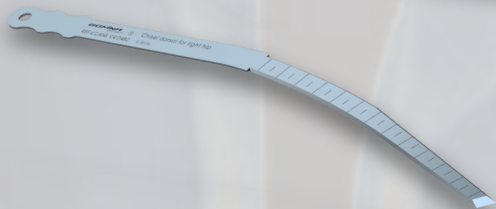
412.401S

Chisel ventral
for right hip

L [mm]

W [mm]

T [mm]



412.402S

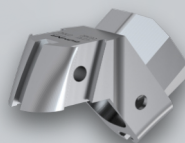
Chisel dorsal
for right hip

L [mm]

W [mm]

T [mm]

Ref. (non-sterile) Article Description



413.901

Jig



400.101

Fixation screw



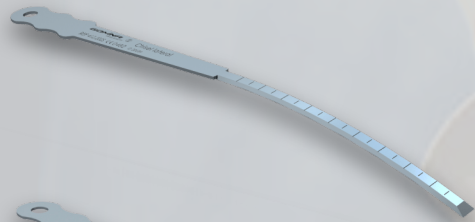
400.106

Allen key

GOMINA
SWISS QUALITY

Indicated references by stem size

Amistem stem sizes 2, 3



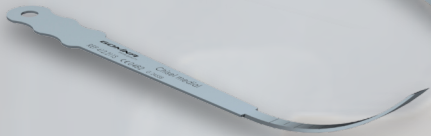
413.202S

Chisel lateral

137.5

7.8

1.19



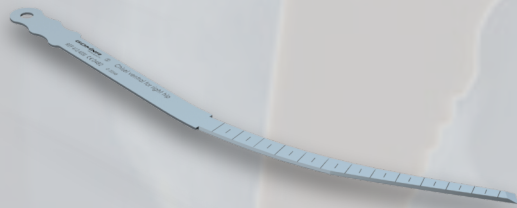
413.211S

Chisel medial

105.2

5.8

1.19



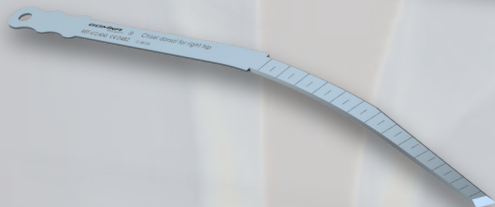
412.403S

Chisel ventral
for right hip

170.0

7.1

1.19



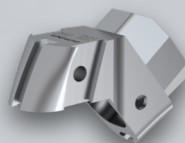
412.404S

Chisel dorsal
for right hip

170.0

7.1

1.19



413.902

Jig



400.101

Fixation screw



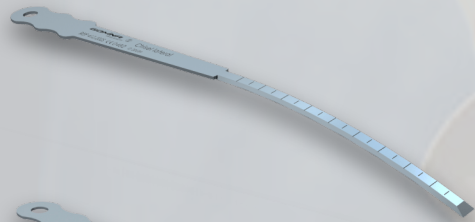
400.106

Allen key

GOMINA
SWISS QUALITY

Indicated references by stem size

Amistem stem sizes 4, 5



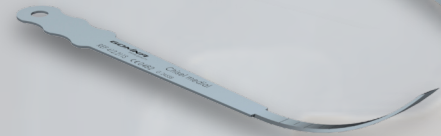
413.203S

Chisel lateral

L [mm]

W [mm]

T [mm]



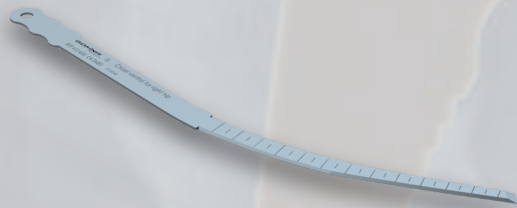
413.211S

Chisel medial

L [mm]

W [mm]

T [mm]



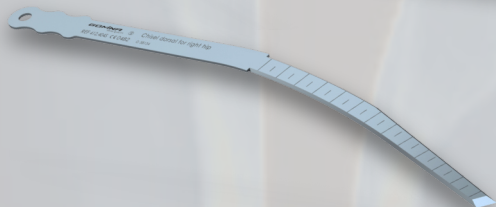
412.403S

Chisel ventral
for right hip

L [mm]

W [mm]

T [mm]



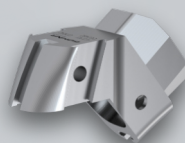
412.404S

Chisel dorsal
for right hip

L [mm]

W [mm]

T [mm]



413.903

Jig



400.101

Fixation screw



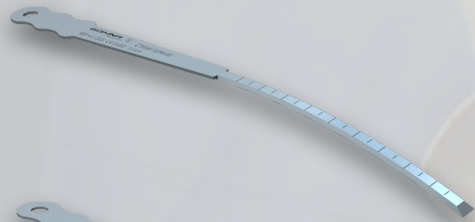
400.106

Allen key

GOMINA
SWISS QUALITY

Indicated references by stem size

Amistem stem sizes 6, 7



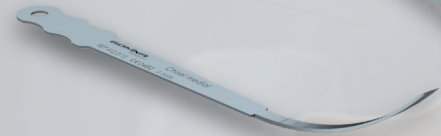
413.203S

Chisel lateral

L [mm]

W [mm]

T [mm]



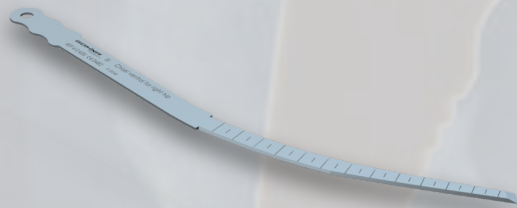
413.211S

Chisel medial

L [mm]

W [mm]

T [mm]



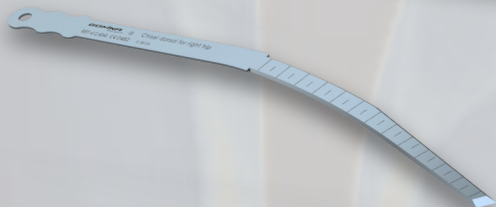
412.409S

Chisel ventral
for right hip

L [mm]

W [mm]

T [mm]



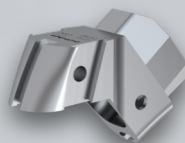
412.410S

Chisel dorsal
for right hip

L [mm]

W [mm]

T [mm]



Ref. (non-sterile) Article Description

413.904

Jig



400.101

Fixation screw



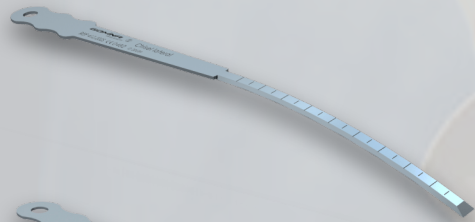
400.106

Allen key

GOMINA
SWISS QUALITY

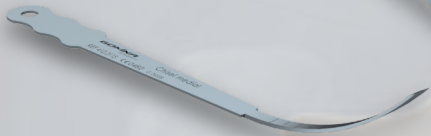
Indicated references by stem size

Amistem stem sizes 8, 9

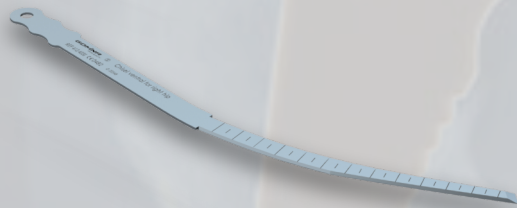


Reference (sterile)	Article Description	L [mm]	W [mm]	T [mm]
---------------------	---------------------	--------	--------	--------

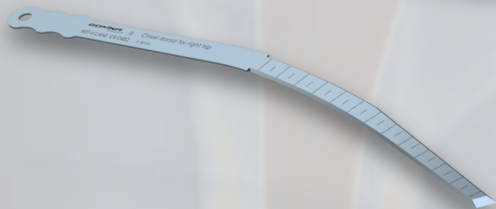
413.203S	Chisel lateral	143.5	9.0	1.19
-----------------	----------------	-------	-----	------



413.211S	Chisel medial	105.2	5.8	1.19
-----------------	---------------	-------	-----	------

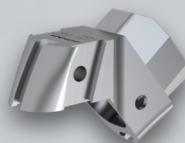


412.409S	Chisel ventral for right hip	200.3	6.1	1.19
-----------------	------------------------------	-------	-----	------



412.410S	Chisel dorsal for right hip	200.3	6.1	1.19
-----------------	-----------------------------	-------	-----	------

Ref. (non-sterile)	Article Description
--------------------	---------------------



413.905	Jig
----------------	-----




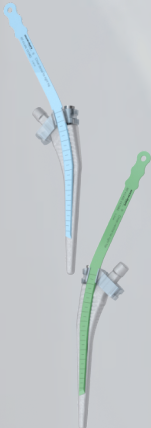
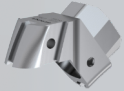



400.101	Fixation screw
----------------	----------------



400.106	Allen key
----------------	-----------

Overview of all references

	Amistem stem sizes	Reference	Article Description	L [mm]	W [mm]	T [mm]
	All sizes	400.001	Handle incl. extraction bolt			
	All sizes	400.100	Extraction bolt (spare part)			
	0/1	413.201S	Chisel lateral	138.0	6.0	1.19
	2/3	413.202S	Chisel lateral	137.5	7.8	1.19
	4/5/6/7/8/9	413.203S	Chisel lateral	143.5	9.0	1.19
	All sizes	413.211S	Chisel medial	105.2	5.8	1.19
	0/1	412.401S	Chisel ventral for right hip	170.0	4.0	1.19
	0/1	412.402S	Chisel dorsal for right hip	170.0	4.0	1.19
	2/3/4/5	412.403S	Chisel ventral for right hip	170.0	7.1	1.19
	2/3/4/5	412.404S	Chisel dorsal for right hip	170.0	7.1	1.19
	6/7/8/9	412.409S	Chisel ventral for right hip	200.3	6.1	1.19
	6/7/8/9	412.410S	Chisel dorsal for right hip	200.3	6.1	1.19
	0/1	413.901	Jig			
	2/3	413.902	Jig			
	4/5	413.903	Jig			
	6/7	413.904	Jig			
	8/9	413.905	Jig			
	All sizes	400.101	Fixation screw			
	All sizes	400.106	Allen key			



Contact



Gomina AG
Raiftstrasse 4
3989 Niederwald, Switzerland
Phone +41 27 970 12 70
Fax +41 27 970 12 75
www.gomina.ch
sales@gomina.ch



GOMINA Deutschland GmbH
Ludwig-Vierling-Strasse 7
89233 Neu-Ulm, Germany
info@gomina.de

Version 2025-05
Last modification: 22.05.2025