

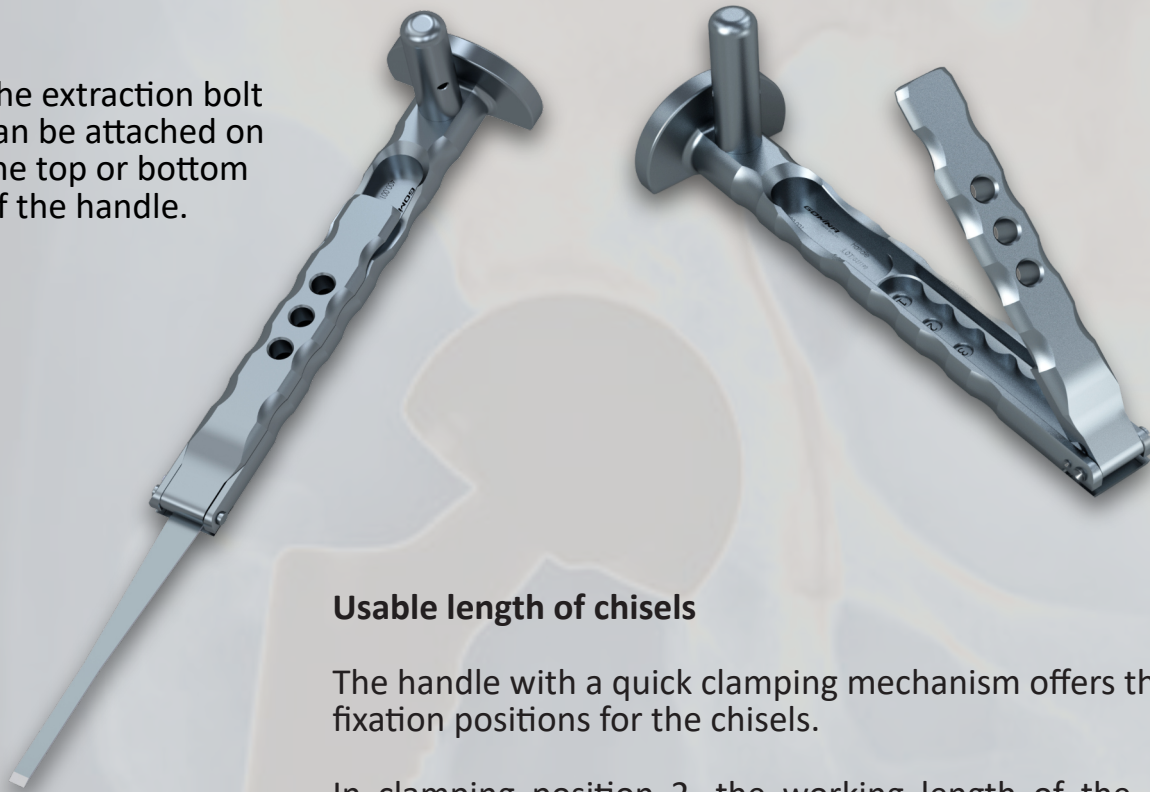
Extraction set for hip and knee revisions

Universal system



Handle and extraction bolt

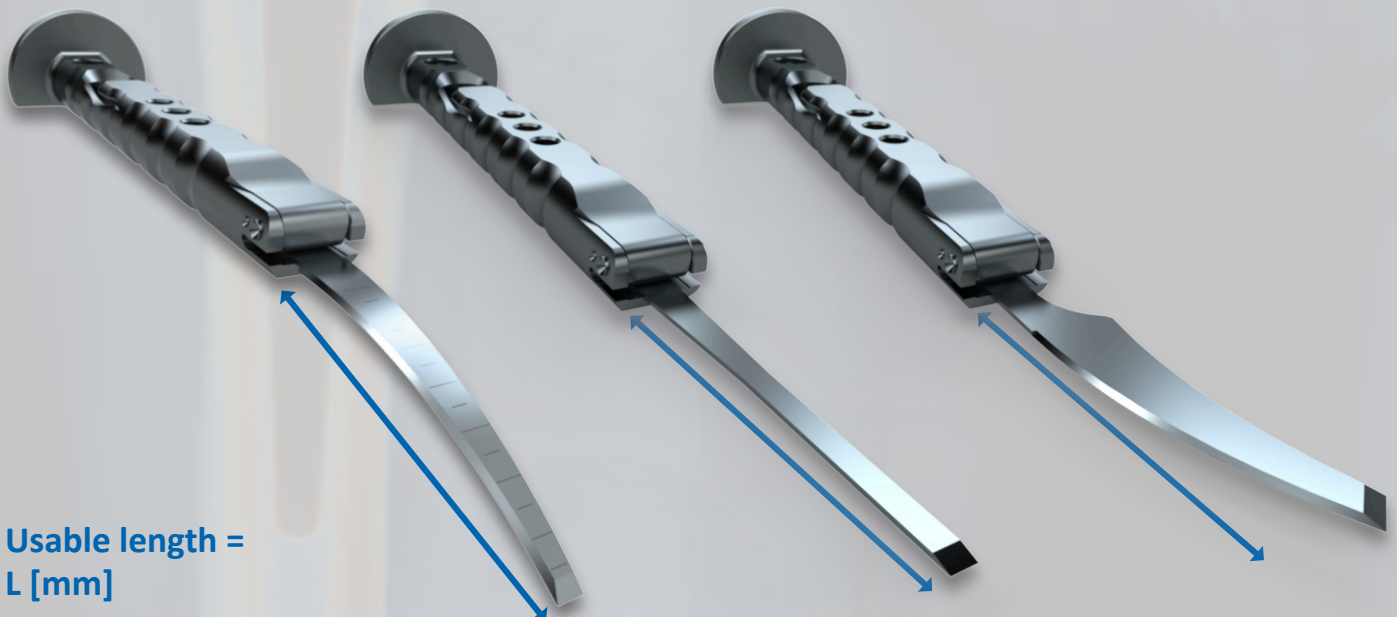
The extraction bolt can be attached on the top or bottom of the handle.



Usable length of chisels

The handle with a quick clamping mechanism offers three fixation positions for the chisels.

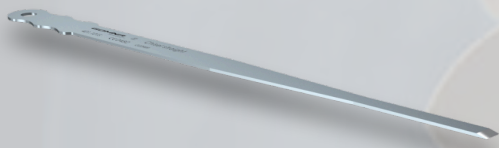
In clamping position 2, the working length of the chisel is extended by 15 mm compared to position 1, and by a further 15 mm in position 3. In total, the working length can be extended by 30 mm from position 1 to position 3.



Usable length =
L [mm]

Universal chisels

The design and dimensions of the chisels fit the most common hip stems.
As single-use instruments, the chisels are supplied in sterile packaging.



Reference (sterile)	Article Description	L [mm]	W [mm]	T [mm]
401.101S	Chisel straight	143.0	6.0	1.19



401.102S	Chisel straight	83.0	6.0	1.19
-----------------	-----------------	------	-----	------



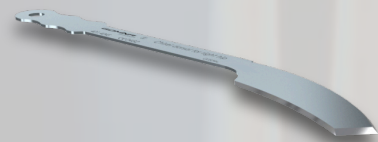
401.201S	Chisel lateral curved	116.0	5.8	1.19
-----------------	-----------------------	-------	-----	------



401.203S	Chisel medial curved	114.5	5.4	1.19
-----------------	----------------------	-------	-----	------



401.403S	Chisel ventral for right hip	118.4	9.5	1.19
-----------------	------------------------------	-------	-----	------



401.404S	Chisel dorsal for right hip	118.4	9.5	1.19
-----------------	-----------------------------	-------	-----	------

Universal chisels

The design and dimensions of the chisels fit the most common unicondylar knee systems.

As single-use instruments, the chisels are supplied in sterile packaging.

	Reference (sterile)	Article Description	L [mm]	W [mm]	T [mm]
	401.401S	Chisel straight	100.0	5.0	1.19
	401.402S	Chisel straight	100.0	5.0	1.19
	401.103S	Chisel straight	100.0	5.0	1.19
	401.104S	Chisel straight	100.0	10.0	1.19
	401.105S	Chisel straight	100.0	15.0	1.19
	401.106S	Chisel straight	100.0	20.0	1.19
	401.107S	Chisel straight	100.0	20.0	1.19

Overview of all references



Reference	Article Description	L [mm]	W [mm]	T [mm]
400.001	Handle incl. extraction bolt			
400.100	Extraction bolt (spare part)			
401.101S	Chisel straight	143.0	6.0	1.19
401.102S	Chisel straight	83.0	6.0	1.19
401.201S	Chisel lateral curved	116.0	5.8	1.19
401.203S	Chisel medial curved	114.5	5.4	1.19
401.403S	Chisel ventral for right hip	118.4	9.5	1.19
401.404S	Chisel dorsal for right hip	118.4	9.5	1.19
<i>*suitable for knee revisions</i>				
401.401S	Chisel straight	100.0	5.0	1.19
401.402S	Chisel straight	100.0	5.0	1.19
401.103S	Chisel straight	100.0	5.0	1.19
401.104S	Chisel straight	100.0	10.0	1.19
401.105S	Chisel straight	100.0	15.0	1.19
401.106S	Chisel straight	100.0	20.0	1.19
401.107S	Chisel straight	100.0	20.0	1.19

Contact



Gomina AG
Raiftstrasse 4
3989 Niederwald, Switzerland
Phone +41 27 970 12 70
Fax +41 27 970 12 75
www.gomina.ch
sales@gomina.ch



GOMINA Deutschland GmbH
Ludwig-Vierling-Strasse 7
89233 Neu-Ulm, Germany
info@gomina.de

Version 2025-05
Last modification: 22.05.2025