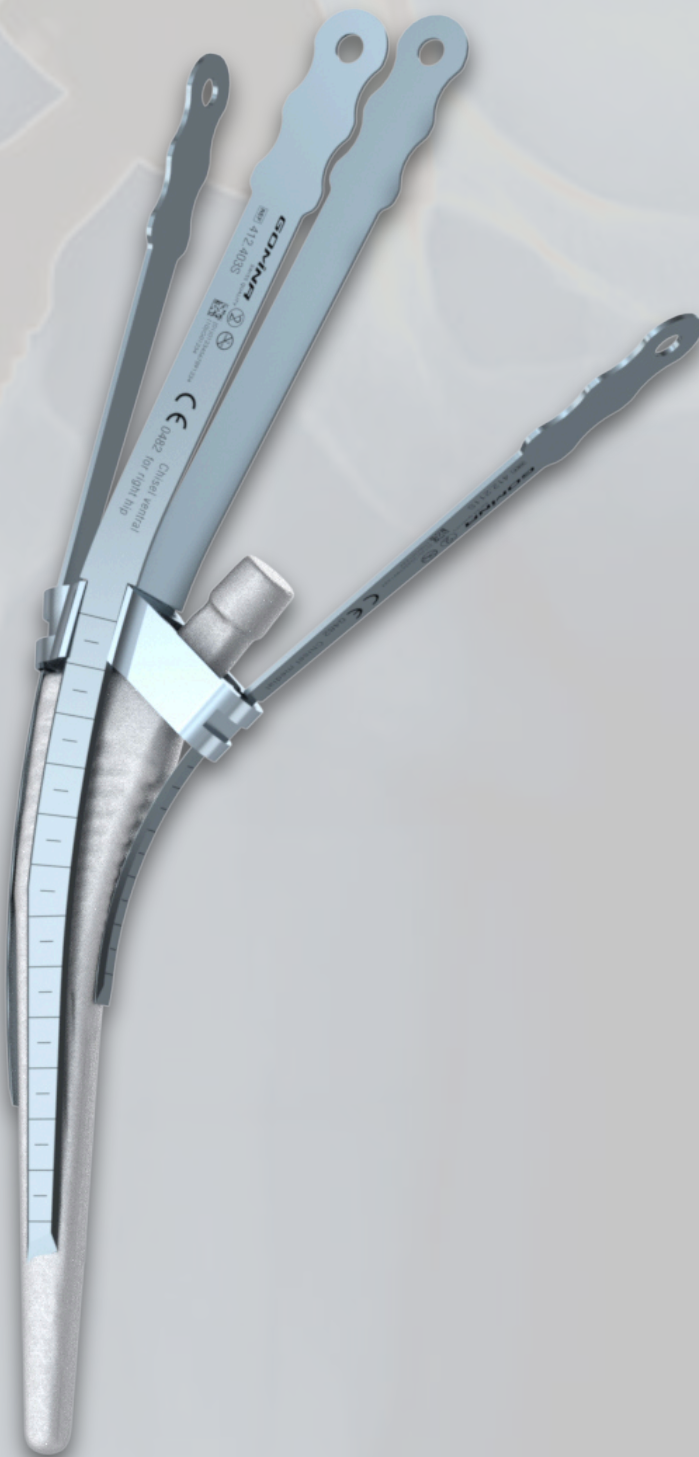


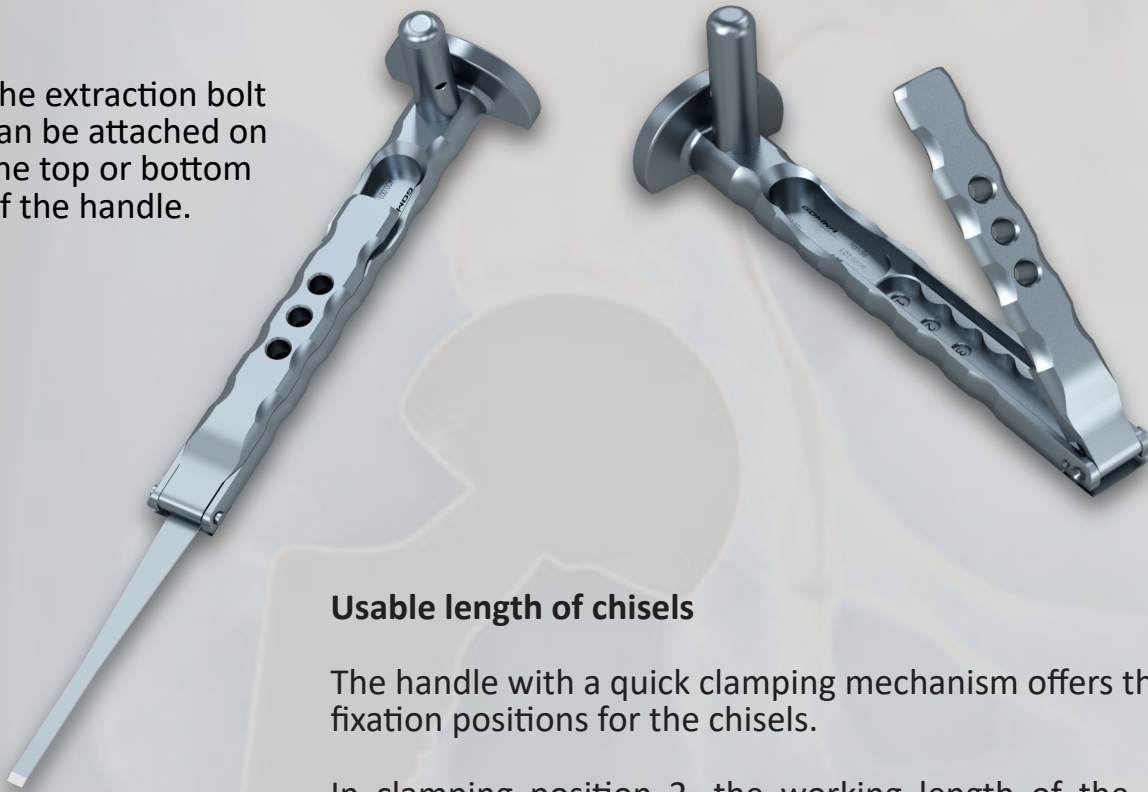
Extraction set for hip revisions

Jig-guided system
fitting **Quadra**[®] (Medacta)



Handle and extraction bolt

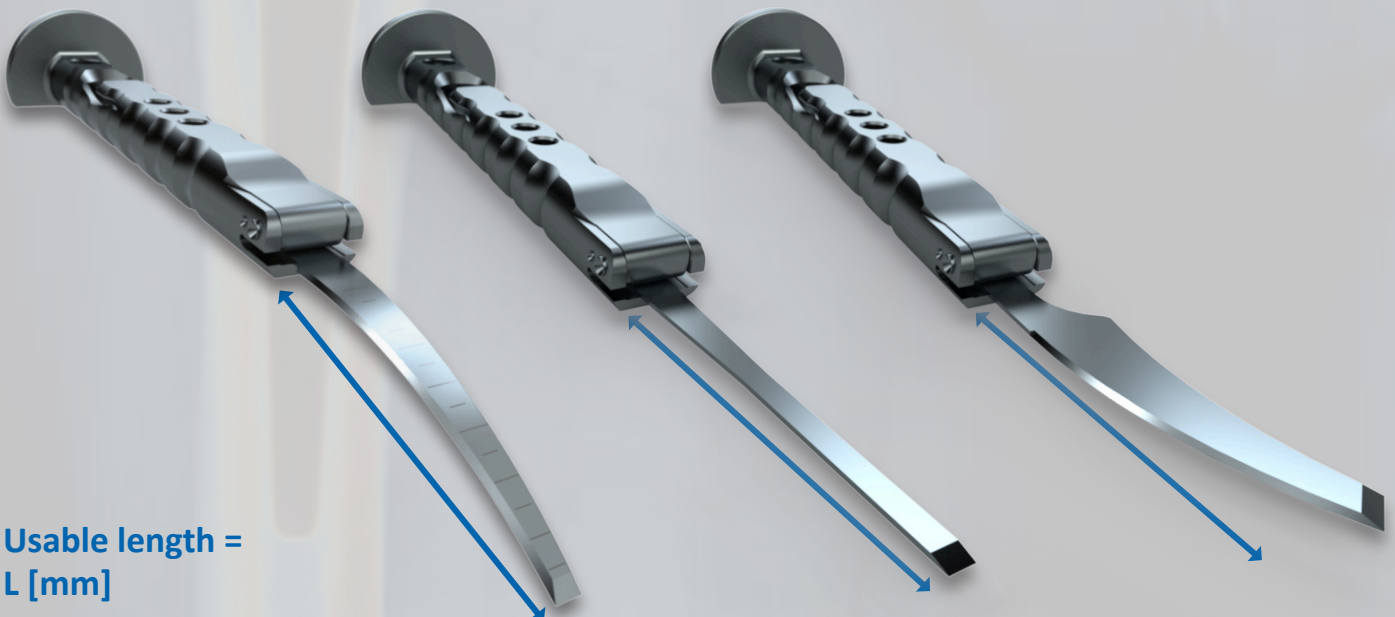
The extraction bolt can be attached on the top or bottom of the handle.



Usable length of chisels

The handle with a quick clamping mechanism offers three fixation positions for the chisels.

In clamping position 2, the working length of the chisel is extended by 15 mm compared to position 1, and by a further 15 mm in position 3. In total, the working length can be extended by 30 mm from position 1 to position 3.

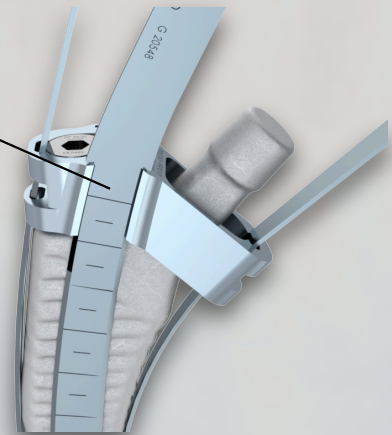
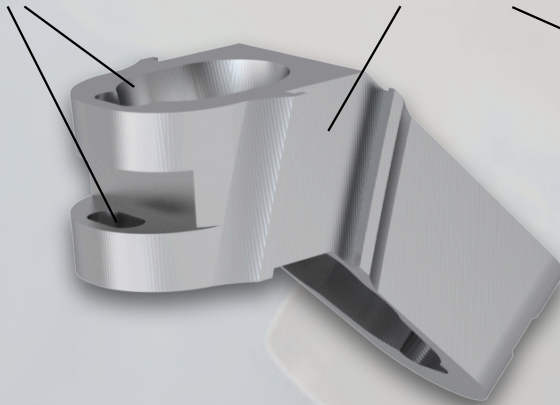


Usable length =
L [mm]

Jig

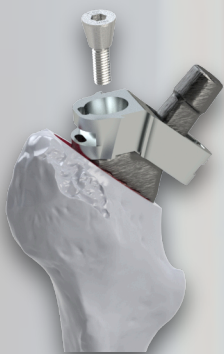
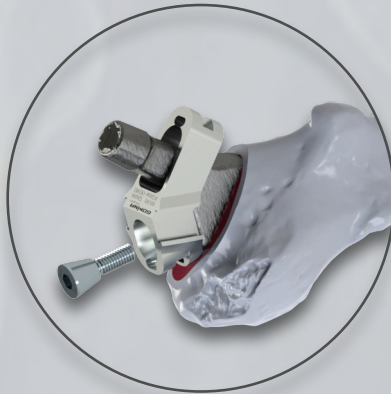
Guide slots

Guide grooves



The jig-guided chisels are matched to the guide slots and grooves of the corresponding jigs. The chisels are guided through both guide slots (or grooves) until the cutting edge makes contact with the bone. Then the chisels can be driven in with light hammer strikes.

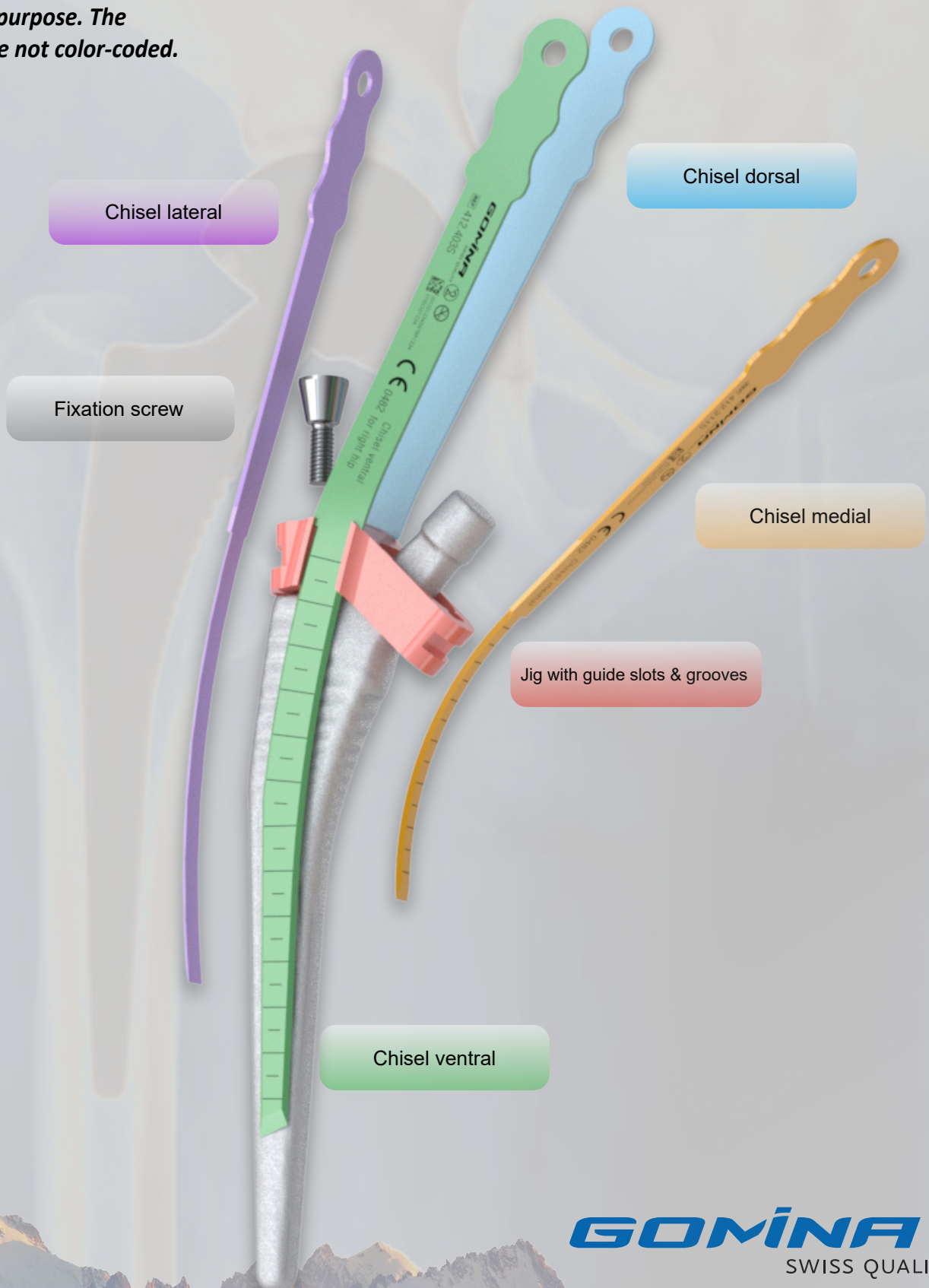
The jig is positioned on the cone of the stem and attached with the fixation screw.



The jig must be correctly positioned on the stem in the lateral-medial direction before it is fixed with the screw. Use the lateral guide slot as a reference.

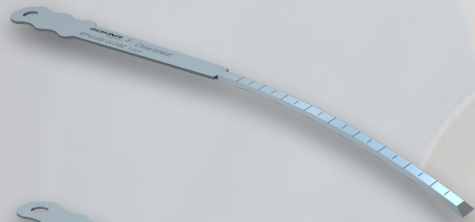
Overview of chisels with jig

**Note: colors are only for illustrative purpose. The products are not color-coded.*



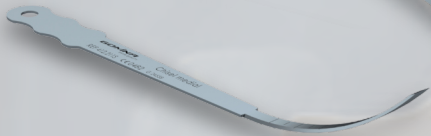
Indicated references by stem size

Quadra® stem sizes **0, 1, 2**

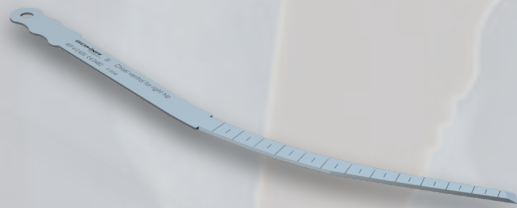


Reference (sterile)	Article Description	L [mm]	W [mm]	T [mm]
---------------------	---------------------	--------	--------	--------

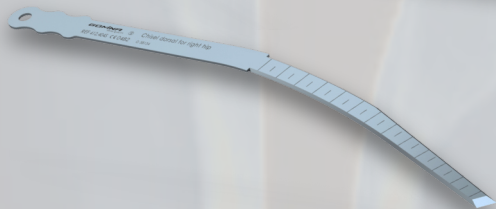
412.202S	Chisel lateral	138.0	6.0	1.19
-----------------	----------------	-------	-----	------



412.211S	Chisel medial	105.2	5.8	1.19
-----------------	---------------	-------	-----	------

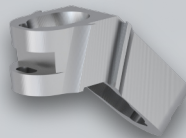


412.401S	Chisel ventral for right hip	170.0	4.0	1.19
-----------------	---------------------------------	-------	-----	------



412.402S	Chisel dorsal for right hip	170.0	4.0	1.19
-----------------	--------------------------------	-------	-----	------

Ref. (non-sterile)	Article Description
--------------------	---------------------



412.902	Jig
----------------	-----



400.103	Fixation screw
----------------	----------------

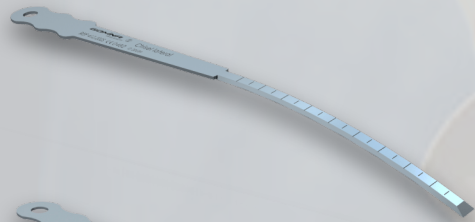


400.104 (short) 400.107 (long)	Allen key
---	-----------

GOMINA
SWISS QUALITY

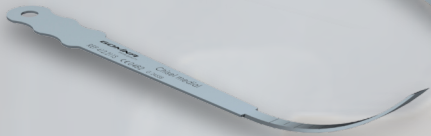
Indicated references by stem size

Quadra® stem sizes **3, 4**

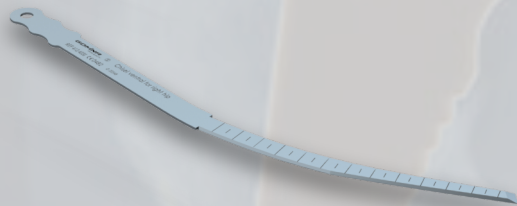


Reference (sterile)	Article Description	L [mm]	W [mm]	T [mm]
---------------------	---------------------	--------	--------	--------

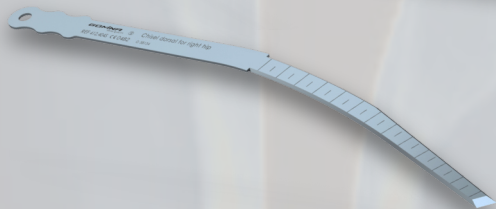
412.203S	Chisel lateral	138.0	7.2	1.19
-----------------	----------------	-------	-----	------



412.211S	Chisel medial	105.2	5.8	1.19
-----------------	---------------	-------	-----	------

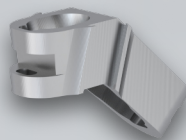


412.403S	Chisel ventral for right hip	170.0	7.1	1.19
-----------------	---------------------------------	-------	-----	------



412.404S	Chisel dorsal for right hip	170.0	7.1	1.19
-----------------	--------------------------------	-------	-----	------

Ref. (non-sterile)	Article Description
--------------------	---------------------



412.904	Jig
----------------	-----



400.103	Fixation screw
----------------	----------------

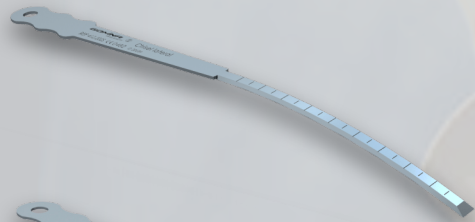


400.104 (short) 400.107 (long)	Allen key
---	-----------

GOMINA
SWISS QUALITY

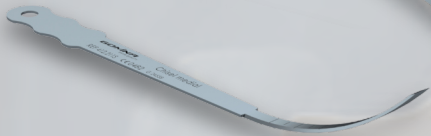
Indicated references by stem size

Quadra® stem sizes **5, 6**

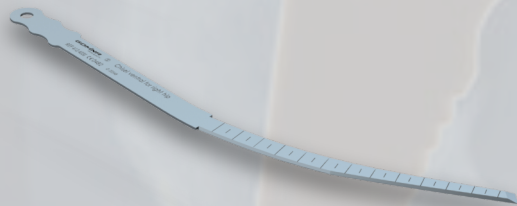


Reference (sterile)	Article Description	L [mm]	W [mm]	T [mm]
---------------------	---------------------	--------	--------	--------

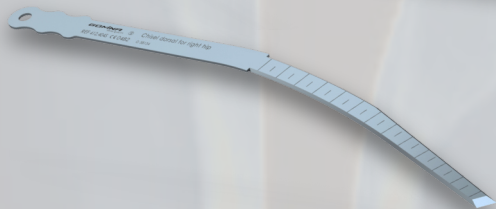
412.203S	Chisel lateral	138.0	7.2	1.19
-----------------	----------------	-------	-----	------



412.211S	Chisel medial	105.2	5.8	1.19
-----------------	---------------	-------	-----	------

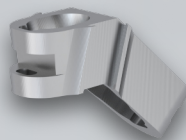


412.409S	Chisel ventral for right hip	200.3	6.1	1.19
-----------------	------------------------------	-------	-----	------



412.410S	Chisel dorsal for right hip	200.3	6.1	1.19
-----------------	-----------------------------	-------	-----	------

Ref. (non-sterile)	Article Description
--------------------	---------------------



412.906	Jig
----------------	-----



400.103	Fixation screw
----------------	----------------

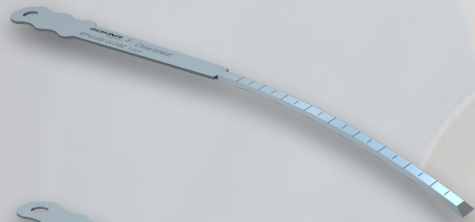


400.104 (short)	Allen key
400.107 (long)	

GOMINA
SWISS QUALITY

Indicated references by stem size

Quadra® stem sizes **7, 8**



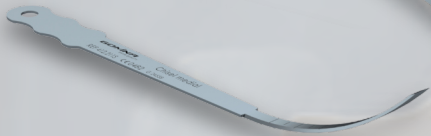
412.203S

Chisel lateral

138.0

7.2

1.19



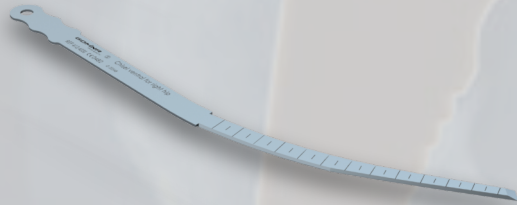
412.211S

Chisel medial

105.2

5.8

1.19



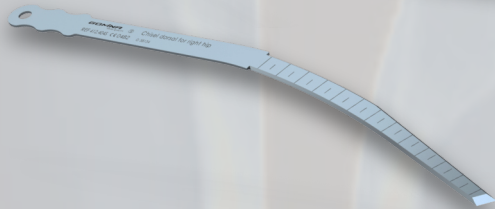
412.411S

Chisel ventral
for right hip

215.3

7.4

1.19



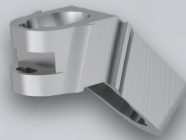
412.412S

Chisel dorsal
for right hip

215.3

7.4

1.19



412.908

Jig



400.103

Fixation screw






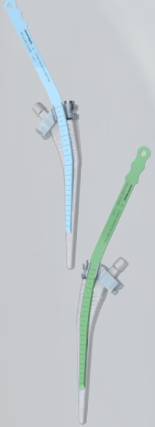
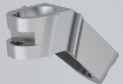


400.104 (short)

400.107 (long)

Allen key

GOMINA
SWISS QUALITY

Overview of all references

	Quadra® stem sizes	Reference	Article Description	L [mm]	W [mm]	T [mm]
	All sizes	400.001	Handle incl. extraction bolt			
	All sizes	400.100	Extraction bolt (spare part)			
	0/1/2	412.202S	Chisel lateral	138.0	6.0	1.19
	3/4/5/6/7/8	412.203S	Chisel lateral	138.0	7.2	1.19
	All sizes	412.211S	Chisel medial	105.2	5.8	1.19
	0/1/2	412.401S	Chisel ventral for right hip	170.0	4.0	1.19
	0/1/2	412.402S	Chisel dorsal for right hip	170.0	4.0	1.19
	3/4	412.403S	Chisel ventral for right hip	170.0	7.1	1.19
	3/4	412.404S	Chisel dorsal for right hip	170.0	7.1	1.19
	5/6	412.409S	Chisel ventral for right hip	200.3	6.1	1.19
	5/6	412.410S	Chisel dorsal for right hip	200.3	6.1	1.19
	7/8	412.411S	Chisel ventral for right hip	215.3	7.4	1.19
	7/8	412.412S	Chisel dorsal for right hip	215.3	7.4	1.19
	0/1/2	412.902	Jig			
	3/4	412.904	Jig			
	5/6	412.906	Jig			
	7/8	412.908	Jig			
	All sizes	400.103	Fixation screw			
	All sizes	400.104 (short) 400.107 (long)	Allen key			

Contact



Gomina AG
Raiftstrasse 4
3989 Niederwald, Switzerland
Phone +41 27 970 12 70
Fax +41 27 970 12 75
www.gomina.ch
sales@gomina.ch



GOMINA Deutschland GmbH
Ludwig-Vierling-Strasse 7
89233 Neu-Ulm, Germany
info@gomina.de

Version 2025-05
Last modification: 22.05.2025