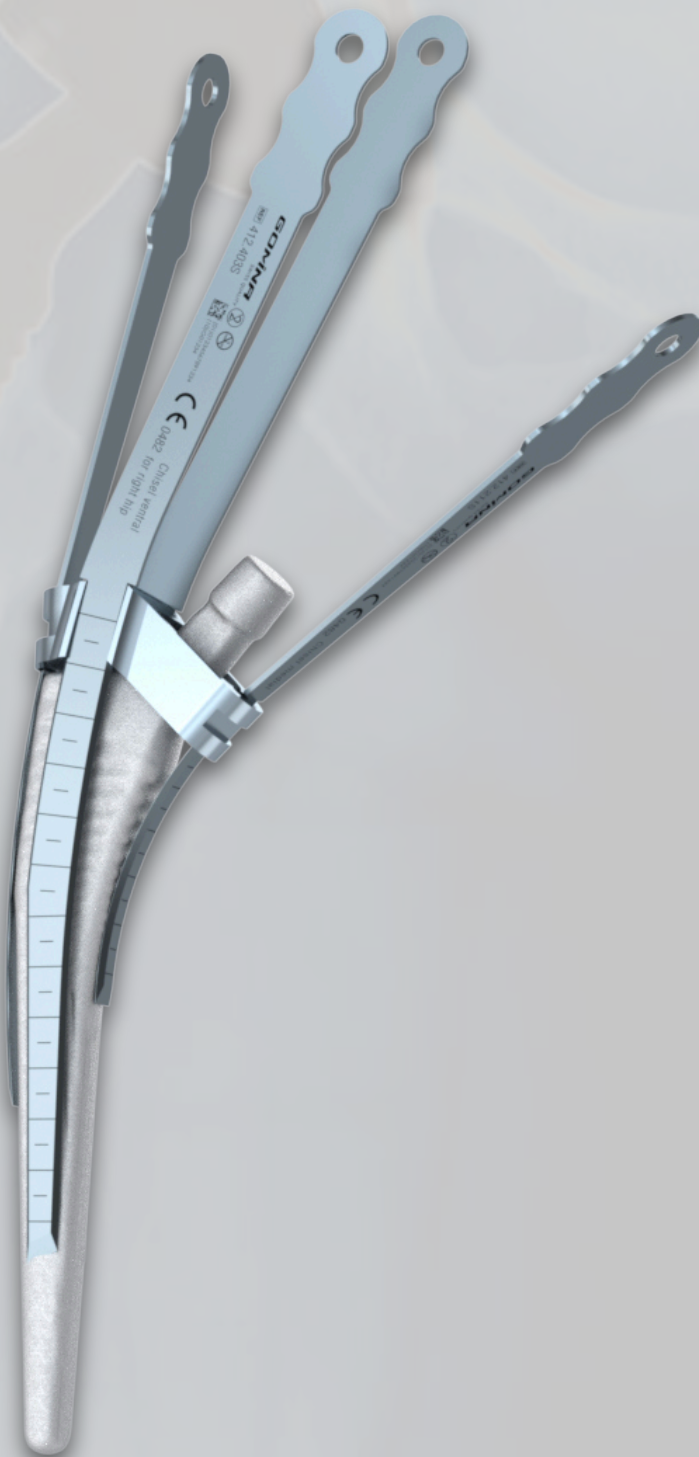


# Extraction set for hip revisions

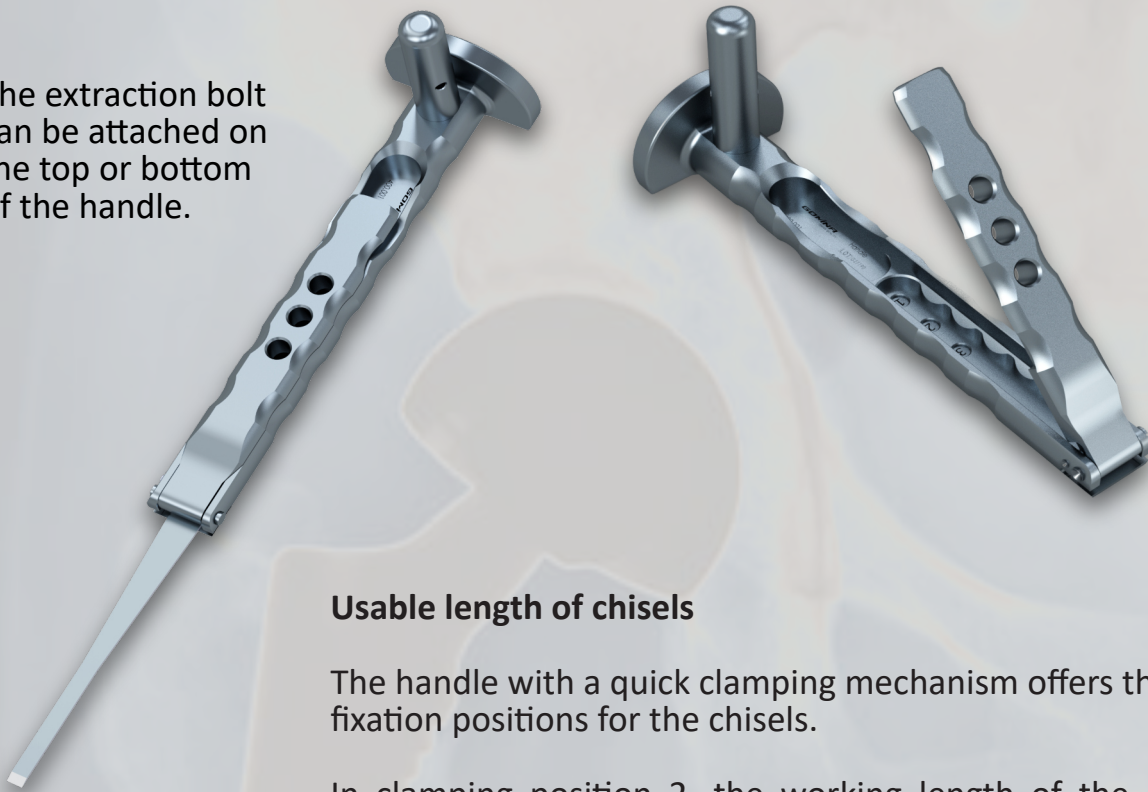
Jig-guided system

fitting **Corail®** (DePuy Synthes)



# Handle and extraction bolt

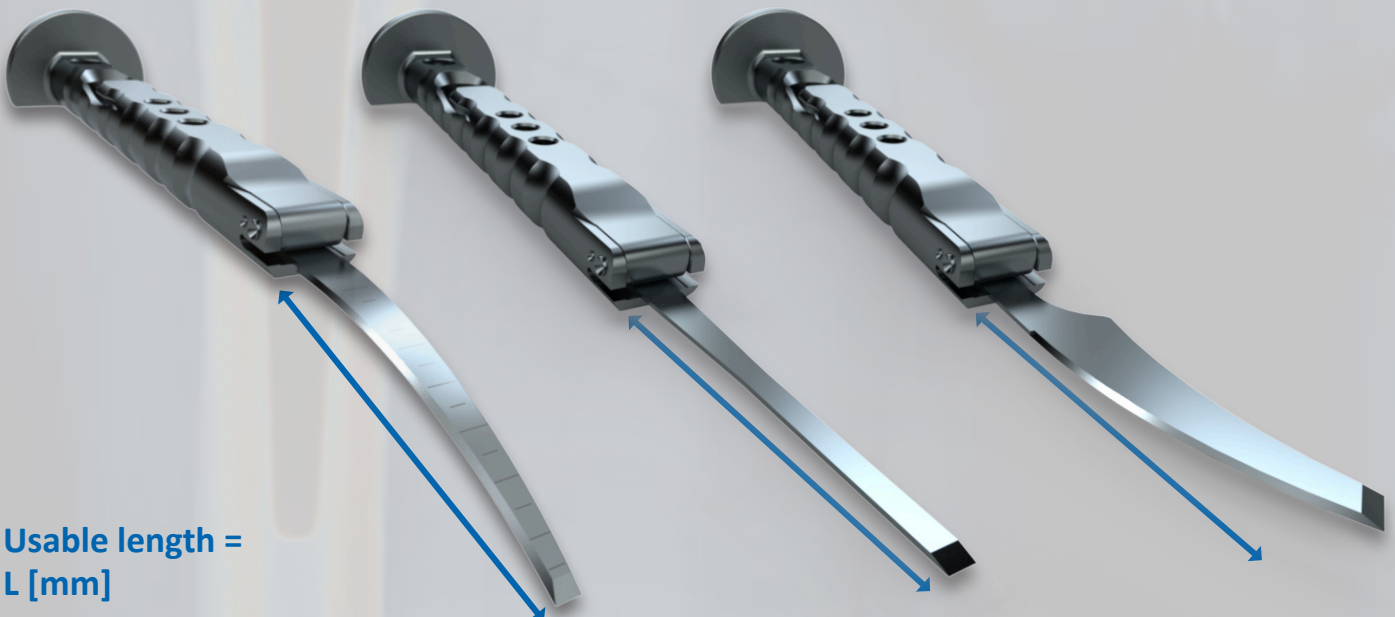
The extraction bolt can be attached on the top or bottom of the handle.



## Usable length of chisels

The handle with a quick clamping mechanism offers three fixation positions for the chisels.

In clamping position 2, the working length of the chisel is extended by 15 mm compared to position 1, and by a further 15 mm in position 3. In total, the working length can be extended by 30 mm from position 1 to position 3.



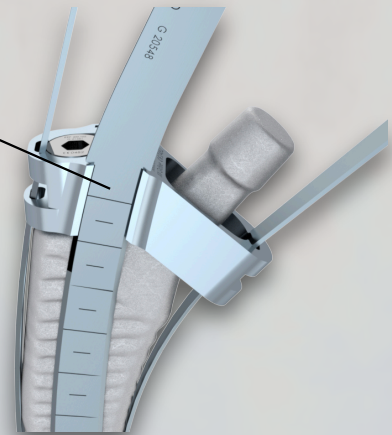
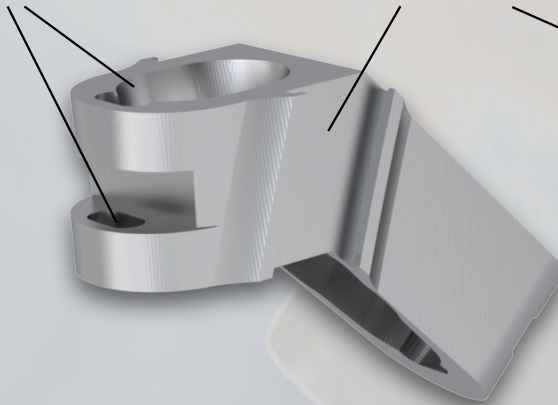
Usable length =  
L [mm]



# Jig

Guide slots

Guide grooves



The jig-guided chisels are matched to the guide slots and grooves of the corresponding jigs. The chisels are guided through both guide slots (or grooves) until the cutting edge makes contact with the bone. Then the chisels can be driven in with light hammer strikes.

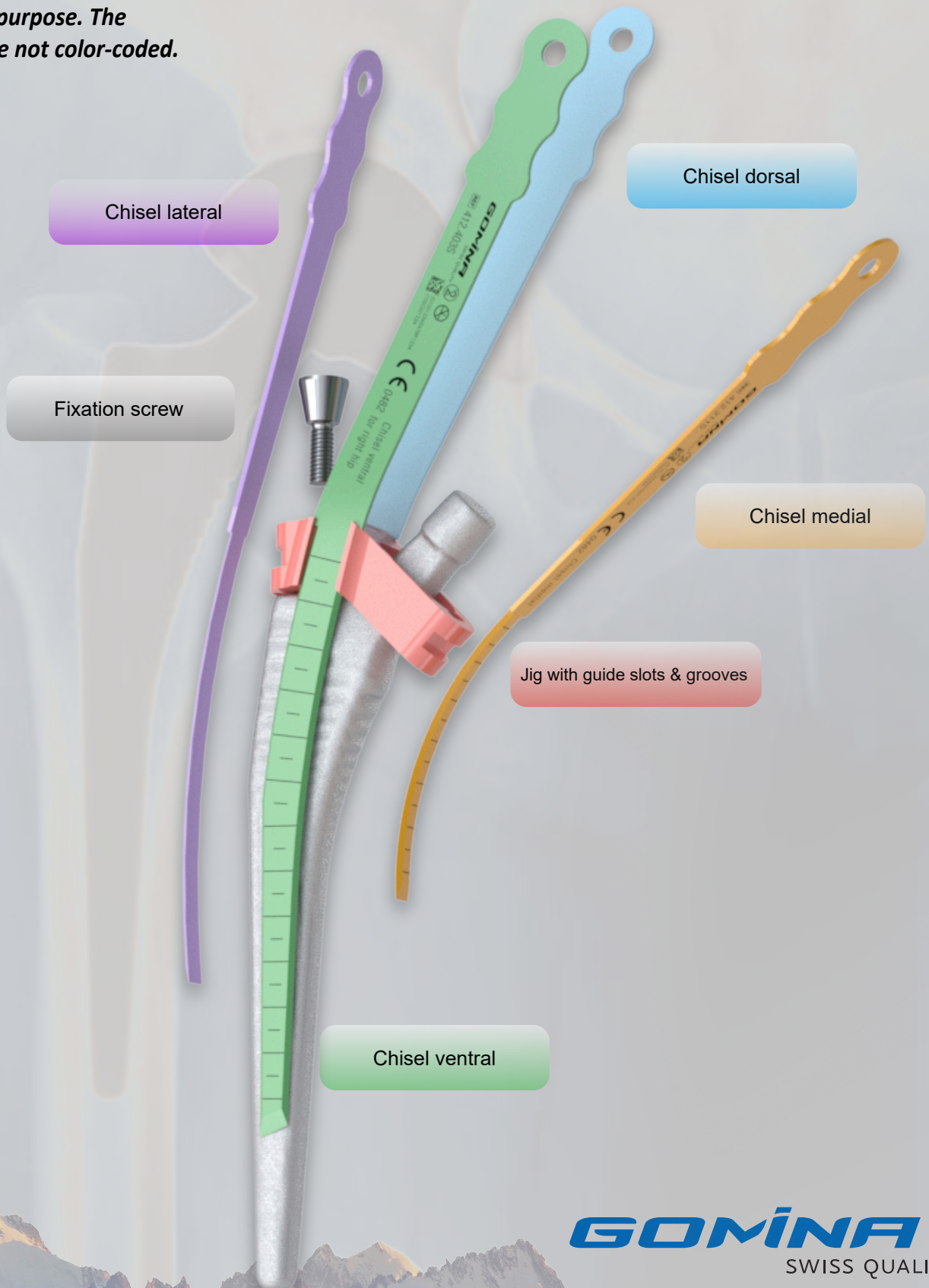
The jig is positioned on the cone of the stem and attached with the fixation screw.



The jig must be correctly positioned on the stem in the lateral-medial direction before it is fixed with the screw. Use the lateral guide slot as a reference.

# Overview of chisels with jig

*\*Note: colors are only for illustrative purpose. The products are not color-coded.*

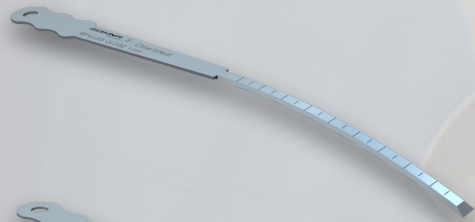




# Indicated references by stem size

**Corail®** stem sizes **08, 09, 10**

(for Corail 135° STD, 125° STD, 135°SN, all collarless)



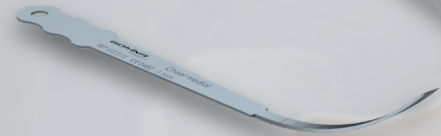
**412.201S**

Chisel lateral

L [mm]

W [mm]

T [mm]



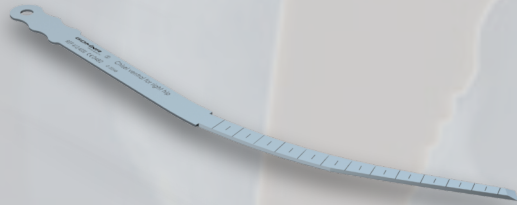
**412.211S**

Chisel medial

L [mm]

W [mm]

T [mm]



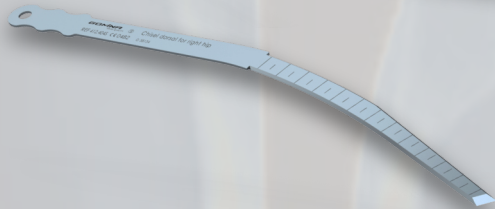
**412.401S**

Chisel ventral  
for right hip

L [mm]

W [mm]

T [mm]



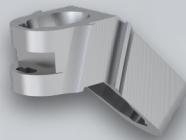
**412.402S**

Chisel dorsal  
for right hip

L [mm]

W [mm]

T [mm]



**412.901**

Jig



**400.102**

Fixation screw



**400.104** (short)

**400.107** (long)

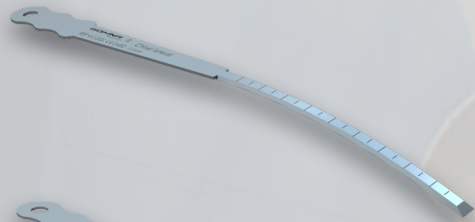
Allen key

**GOMINA**  
SWISS QUALITY

# Indicated references by stem size

## Corail® stem sizes **11, 12, 13**

(for Corail 135° STD, 125° STD, 135°SN, all collarless)



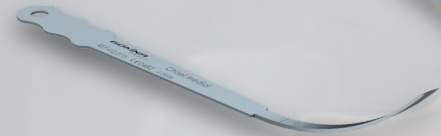
**412.202S**

Chisel lateral

L [mm]

W [mm]

T [mm]



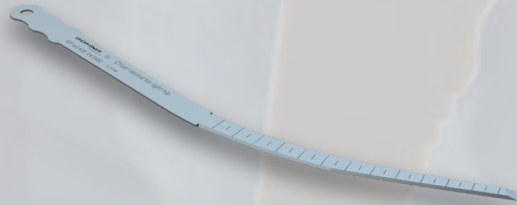
**412.211S**

Chisel medial

L [mm]

W [mm]

T [mm]



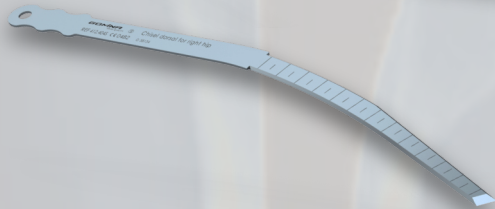
**412.403S**

Chisel ventral  
for right hip

L [mm]

W [mm]

T [mm]



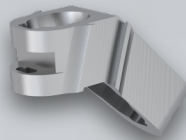
**412.404S**

Chisel dorsal  
for right hip

L [mm]

W [mm]

T [mm]



**412.903**

Jig



**400.102**

Fixation screw



**400.104** (short)

**400.107** (long)

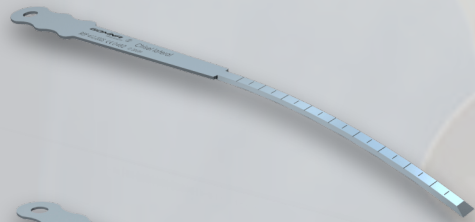
Allen key

**GOMINA**  
SWISS QUALITY

# Indicated references by stem size

## Corail® stem sizes 14, 15, 16

(for Corail 135° STD, 125° STD, 135°SN, all collarless)



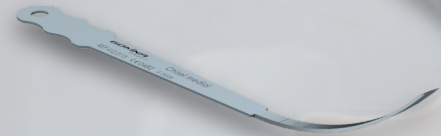
**412.202S**

Chisel lateral

L [mm]

W [mm]

T [mm]



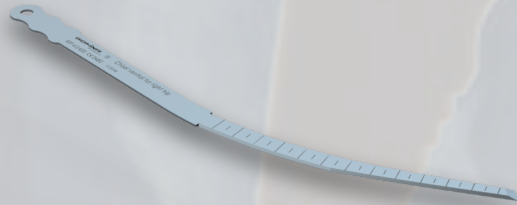
**412.211S**

Chisel medial

L [mm]

W [mm]

T [mm]



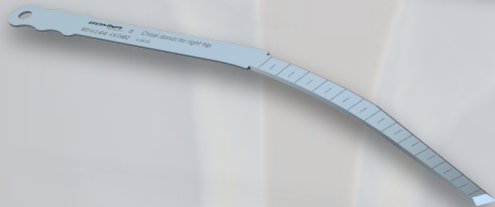
**412.405S**

Chisel ventral  
for right hip

L [mm]

W [mm]

T [mm]



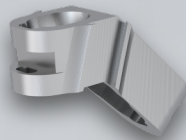
**412.406S**

Chisel dorsal  
for right hip

L [mm]

W [mm]

T [mm]



**412.905**

Jig



**400.102**

Fixation screw



**400.104** (short)

**400.107** (long)

Allen key

**GOMINA**

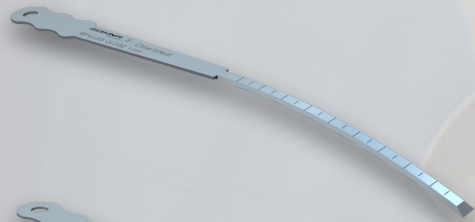
SWISS QUALITY



# Indicated references by stem size

**Corail®** stem sizes **18, 20**

(for Corail 135° STD, 125° STD, 135°SN, all collarless)



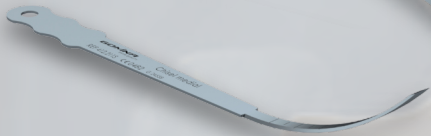
**412.202S**

Chisel lateral

138.0

6.0

1.19



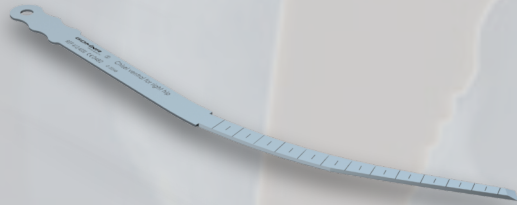
**412.211S**

Chisel medial

105.2

5.8

1.19



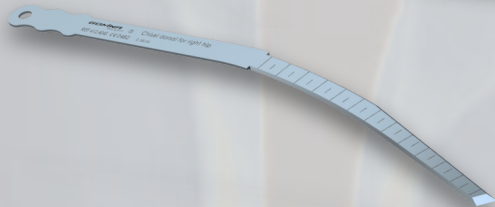
**412.407S**

Chisel ventral  
for right hip

233.5

9.7

1.19



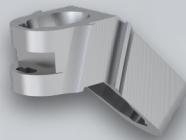
**412.408S**

Chisel dorsal  
for right hip

233.5

9.7

1.19



**412.907**

Jig



**400.102**

Fixation screw



**400.104** (short)

**400.107** (long)

Allen key

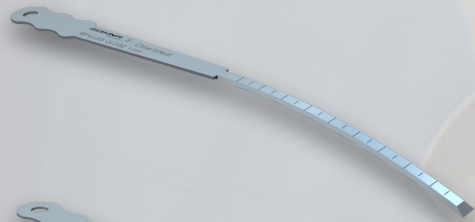
**GOMINA**  
SWISS QUALITY



# Indicated references by stem size

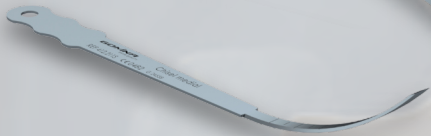
**Corail®** stem sizes **08, 09, 10**

(for Corail High Offset 135° KHO, 125° KLA, all collarless)

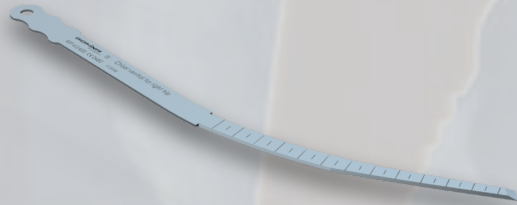


Reference (sterile)	Article Description	L [mm]	W [mm]	T [mm]
---------------------	---------------------	--------	--------	--------

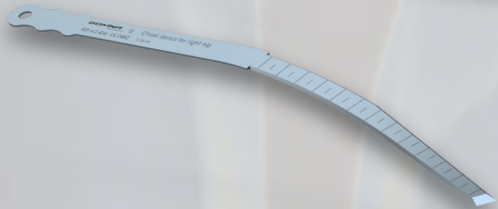
<b>412.201S</b>	Chisel lateral	133.0	4.8	1.19
-----------------	----------------	-------	-----	------



<b>412.211S</b>	Chisel medial	105.2	5.8	1.19
-----------------	---------------	-------	-----	------

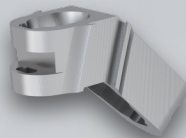


<b>412.401S</b>	Chisel ventral for right hip	170.0	4.0	1.19
-----------------	---------------------------------	-------	-----	------



<b>412.402S</b>	Chisel dorsal for right hip	170.0	4.0	1.19
-----------------	--------------------------------	-------	-----	------

Ref. (non-sterile)	Article Description
--------------------	---------------------



<b>412.909</b>	Jig
----------------	-----



<b>400.102</b>	Fixation screw
----------------	----------------



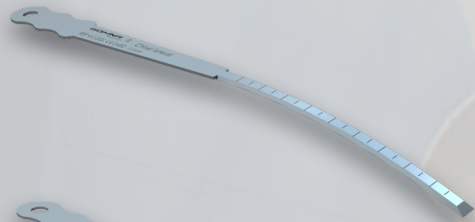
<b>400.104</b> (short) <b>400.107</b> (long)	Allen key
---	-----------

**GOMINA**  
SWISS QUALITY

# Indicated references by stem size

## Corail® stem sizes **11, 12, 13**

(for Corail High Offset 135° KHO, 125° KLA, all collarless)



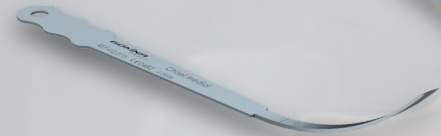
**412.202S**

Chisel lateral

L [mm]

W [mm]

T [mm]



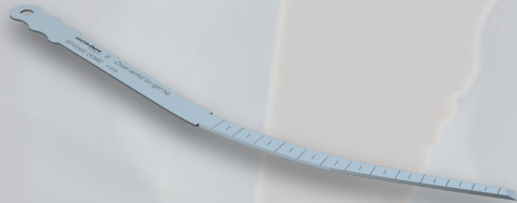
**412.211S**

Chisel medial

L [mm]

W [mm]

T [mm]



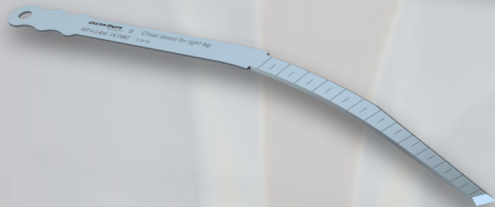
**412.403S**

Chisel ventral  
for right hip

L [mm]

W [mm]

T [mm]



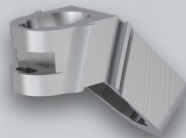
**412.404S**

Chisel dorsal  
for right hip

L [mm]

W [mm]

T [mm]



**412.910**

Jig



**400.102**

Fixation screw



**400.104** (short)

**400.107** (long)

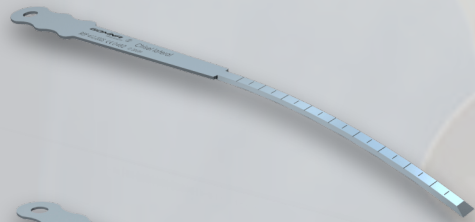
Allen key

**GOMINA**  
SWISS QUALITY

# Indicated references by stem size

**Corail®** stem sizes **14, 15, 16**

(for Corail High Offset 135° KHO, 125° KLA, all collarless)



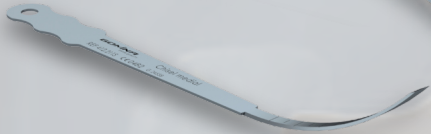
**412.202S**

Chisel lateral

138.0

6.0

1.19



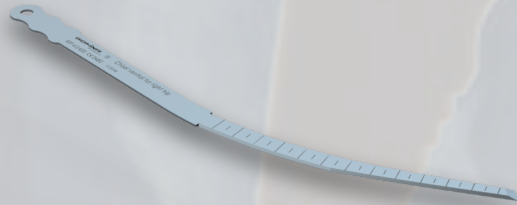
**412.211S**

Chisel medial

105.2

5.8

1.19



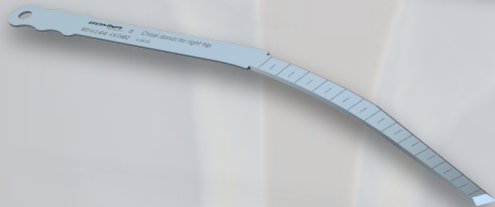
**412.405S**

Chisel ventral  
for right hip

215.3

7.4

1.19



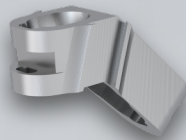
**412.406S**

Chisel dorsal  
for right hip

215.3

7.4

1.19



**412.911**

Jig



**400.102**

Fixation screw



**400.104** (short)

**400.107** (long)

Allen key

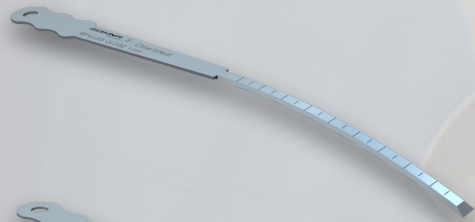
**GOMINA**  
SWISS QUALITY



# Indicated references by stem size

**Corail®** stem sizes **18, 20**

(for Corail High Offset 135° KHO, 125° KLA, all collarless)



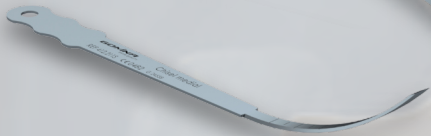
**412.202S**

Chisel lateral

138.0

6.0

1.19



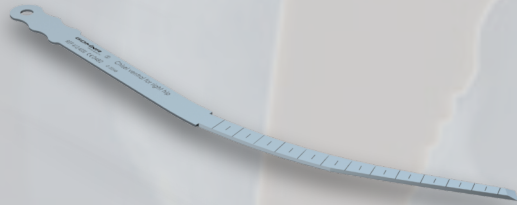
**412.211S**

Chisel medial

105.2

5.8

1.19



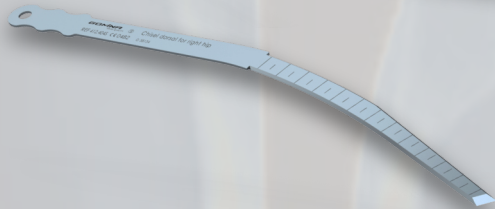
**412.407S**

Chisel ventral  
for right hip

233.5

9.7

1.19



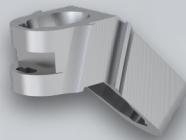
**412.408S**

Chisel dorsal  
for right hip

233.5

9.7

1.19



**412.912**

Jig



**400.102**

Fixation screw






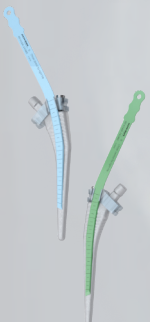
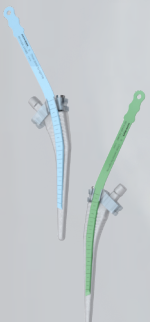
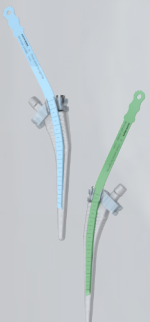
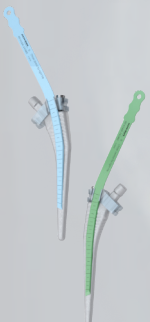
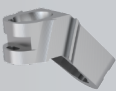
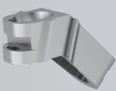
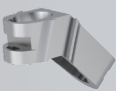
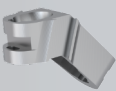

**400.104** (short)

**400.107** (long)

Allen key

**GOMINA**  
SWISS QUALITY

# Overview of all references

	Corail® stem sizes	Reference	Article Description	L [mm]	W [mm]	T [mm]
	All sizes	400.001	Handle incl. extraction bolt			
	All sizes	400.100	Extraction bolt (spare part)			
	08/09/10	412.201S	Chisel lateral	133.0	4.8	1.19
	11/12/13/14/15/16/18/20	412.202S	Chisel lateral	138.0	6.0	1.19
	All sizes	412.211S	Chisel medial	105.2	5.8	1.19
	08/09/10	412.401S	Chisel ventral for right hip	170.0	4.0	1.19
	08/09/10	412.402S	Chisel dorsal for right hip	170.0	4.0	1.19
	11/12/13	412.403S	Chisel ventral for right hip	170.0	7.1	1.19
	11/12/13	412.404S	Chisel dorsal for right hip	170.0	7.1	1.19
	14/15/16	412.405S	Chisel ventral for right hip	215.3	7.4	1.19
	14/15/16	412.406S	Chisel dorsal for right hip	215.3	7.4	1.19
	18/20	412.407S	Chisel ventral for right hip	233.5	9.7	1.19
	18/20	412.408S	Chisel dorsal for right hip	233.5	9.7	1.19
	08/09/10	412.901	Jig (for Corail 135° STD, 125° STD, 135°SN, all collarless)			
	11/12/13	412.903	Jig (for Corail 135° STD, 125° STD, 135°SN, all collarless)			
	14/15/16	412.905	Jig (for Corail 135° STD, 125° STD, 135°SN, all collarless)			
	18/20	412.907	Jig (for Corail 135° STD, 125° STD, 135°SN, all collarless)			
	08/09/10	412.909	Jig (for Corail High Offset 135° KHO, 125° KLA, all collarless)			
	11/12/13	412.910	Jig (for Corail High Offset 135° KHO, 125° KLA, all collarless)			
	14/15/16	412.911	Jig (for Corail High Offset 135° KHO, 125° KLA, all collarless)			
	18/20	412.912	Jig (for Corail High Offset 135° KHO, 125° KLA, all collarless)			
	All sizes	400.102	Fixation screw			
	All sizes	400.104 (short) 400.107 (long)	Allen key			

# Contact



Gomina AG  
Raiftstrasse 4  
3989 Niederwald, Switzerland  
Phone +41 27 970 12 70  
Fax +41 27 970 12 75  
[www.gomina.ch](http://www.gomina.ch)  
[sales@gomina.ch](mailto:sales@gomina.ch)



GOMINA Deutschland GmbH  
Ludwig-Vierling-Strasse 7  
89233 Neu-Ulm, Germany  
[info@gomina.de](mailto:info@gomina.de)

Version 2025-05  
Last modification: 22.05.2025